

Anti-CD1A antibody [7A7] (STJ97913)

GENERAL INFORMATION

Product Type	Primary antibodies
Applications	WB/IHC/IF/ELISA
Host / Source	Mouse
Reactivity	Human

PRODUCT PROPERTIES

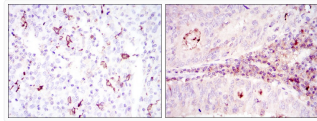
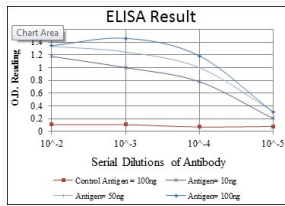
Clonality	Monoclonal
Conjugation	Unconjugated
Purification	Affinity purification
Dilution Range	WB 1:500-1:2000 IHC 1:200-1:1000 IF 1:200-1:1000 ELISA 1:10000
Formulation	Liquid in PBS containing 0.03% Sodium Azide, 0.5% BSA, 50% Glycerol.
Isotype	IgG1
Molecular Weight	Calculated: 37kD
Storage Instruction	Store at -20°C for up to 1 year from the date of receipt, and avoid repeat freeze-thaw cycles.

TARGET INFORMATION

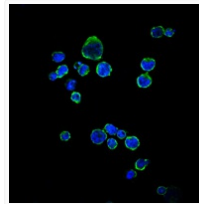
Gene ID	909
Gene Symbol	CD1A
UniProt ID	CD1A_HUMAN
Specificity	CD1A Monoclonal Antibody detects endogenous levels of CD1A protein.

ADDITIONAL INFORMATION

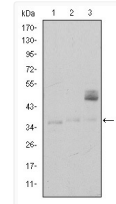
Note STRICTLY FOR FURTHER SCIENTIFIC RESEARCH USE ONLY (RUO). MUST NOT TO BE USED IN DIAGNOSTIC OR THERAPEUTIC APPLICATIONS.



Immunohistochemistry analysis of paraffin-embedded cervical cancer tissues (left) and colon cancer tissues (right) with DAB staining using CD1A monoclonal antibody.



Immunofluorescence analysis of RAJI cells using CD1A monoclonal antibody (green). Blue: DRAQ5 fluorescent DNA dye.



Western blot analysis using CD1A monoclonal antibody against K562 (1), RAJI (2), and MOLT4 (3) cell lysate.