

Anti-ALCAM antibody (405-524 aa) [10F1G12] (STJ97908)

GENERAL INFORMATION

Product Type	Primary antibodies
Applications	IHC/IF/ELISA
Host / Source	Mouse
Reactivity	Human

PRODUCT PROPERTIES

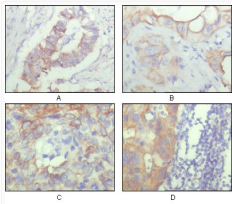
Clonality	Monoclonal
Conjugation	Unconjugated
Purification	Affinity purification
Dilution Range	IHC 1:200-1:1000 ELISA 1:10000 IF 1:50-200
Formulation	Liquid in PBS containing 0.03% Sodium Azide, 0.5% BSA, 50% Glycerol.
Isotype	IgG1
Storage Instruction	Store at -20°C for up to 1 year from the date of receipt, and avoid repeat freeze-thaw cycles.

TARGET INFORMATION

Gene ID	214
Gene Symbol	ALCAM
UniProt ID	CD166_HUMAN
Immunogen Region	405-524 aa
Specificity	CD166 Monoclonal Antibody detects endogenous levels of CD166 protein.

ADDITIONAL INFORMATION

Note **STRICTLY FOR FURTHER SCIENTIFIC RESEARCH USE ONLY (RUO). MUST NOT TO BE USED IN DIAGNOSTIC OR THERAPEUTIC APPLICATIONS.**



Immunohistochemistry analysis of paraffin-embedded human ovary carcinoma (A), kidney carcinoma (B), lung carcinoma (C) and breast carcinoma (D), showing cytoplasmic and membrane localization with DAB staining using CD166 monoclonal antibody.