

Anti-BMI1 antibody [3E3] (STJ97874)

GENERAL INFORMATION

Product Type	Primary antibodies
Applications	WB/IHC/IF/FC/ELISA
Host / Source	Mouse
Reactivity	Human

PRODUCT PROPERTIES

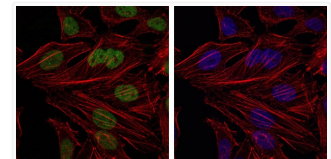
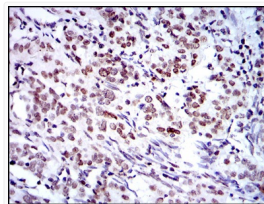
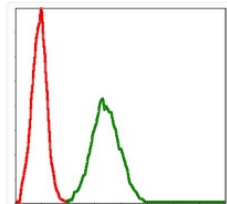
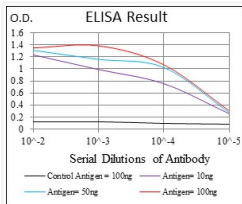
Clonality	Monoclonal
Conjugation	Unconjugated
Purification	Affinity purification
Dilution Range	WB 1:500-1:2000 IHC 1:200-1:1000 IF 1:200-1:1000 FC 1:200-1:400 ELISA 1:10000
Formulation	Liquid in PBS containing 0.03% Sodium Azide, 0.5% BSA, 50% Glycerol.
Isotype	IgG1
Molecular Weight	Calculated: 37kD
Storage Instruction	Store at -20°C for up to 1 year from the date of receipt, and avoid repeat freeze-thaw cycles.

TARGET INFORMATION

Gene ID	100532731/648
Gene Symbol	BMI1
UniProt ID	BMI1_HUMAN
Specificity	Bmi-1 Monoclonal Antibody detects endogenous levels of Bmi-1 protein.

ADDITIONAL INFORMATION

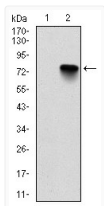
Note STRICTLY FOR FURTHER SCIENTIFIC RESEARCH USE ONLY (RUO). MUST NOT TO BE USED IN DIAGNOSTIC OR THERAPEUTIC APPLICATIONS.



Flow cytometric analysis of NIH/3T3 cells using Bmi-1 monoclonal antibody (green) and negative control (red).

Immunohistochemistry analysis of paraffin-embedded cervical cancer tissues with DAB staining using Bmi-1 monoclonal antibody.

Immunofluorescence analysis of HeLa cells using Bmi-1 monoclonal antibody (green). Blue: DRAQ5 fluorescent DNA dye. Red: Actin filaments have been labeled with Alexa Fluor-555 phalloidin.



Western blot analysis using Bmi-1 monoclonal antibody against HEK293 (1) and BMI1-hlgGfC transfected HEK293 (2) cell lysate.