

Anti-BECN1 antibody [2A4] (STJ97862)

GENERAL INFORMATION

Product Type	Primary antibodies
Applications	WB/IHC/IF/FC/ELISA
Host / Source	Mouse
Reactivity	Human

PRODUCT PROPERTIES

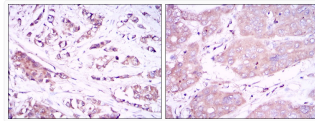
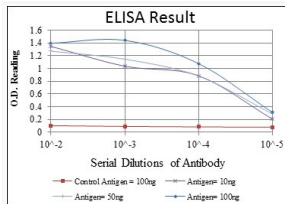
Clonality	Monoclonal
Conjugation	Unconjugated
Purification	Affinity purification
Dilution Range	WB 1:500-1:2000 IHC 1:200-1:1000 FC 1:200-1:400 ELISA 1:10000 IF 1:50-200
Formulation	Liquid in PBS containing 0.03% Sodium Azide, 0.5% BSA, 50% Glycerol.
Isotype	IgG1
Molecular Weight	Calculated: 52kD
Storage Instruction	Store at -20°C for up to 1 year from the date of receipt, and avoid repeat freeze-thaw cycles.

TARGET INFORMATION

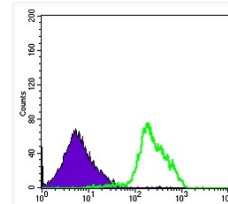
Gene ID	8678
Gene Symbol	BECN1
UniProt ID	BECN1_HUMAN
Specificity	Beclin-1 Monoclonal Antibody detects endogenous levels of Beclin-1 protein.

ADDITIONAL INFORMATION

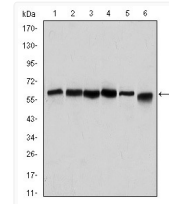
Note STRICTLY FOR FURTHER SCIENTIFIC RESEARCH USE ONLY (RUO). MUST NOT TO BE USED IN DIAGNOSTIC OR THERAPEUTIC APPLICATIONS.



Immunohistochemistry analysis of paraffin-embedded breast cancer tissues (left) and liver cancer tissues (right) with DAB staining using Beclin-1 monoclonal antibody.



Flow cytometric analysis of RAJI cells using Beclin-1 monoclonal antibody (green) and negative control (purple).



Western blot analysis using Beclin-1 monoclonal antibody against HeLa (1), A431 (2), MCF-7 (3), RAJI (4), Jurkat (5) and SKBR-3 (6) cell lysate.