

Anti-ATF2 antibody [4F12] (STJ97854)

GENERAL INFORMATION

| | |
|---------------|--------------------|
| Product Type | Primary antibodies |
| Applications | WB/IHC/IF/ELISA |
| Host / Source | Mouse |
| Reactivity | Human/Mouse |

PRODUCT PROPERTIES

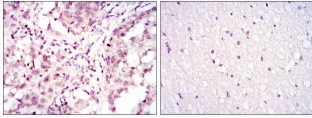
| | |
|---------------------|--|
| Clonality | Monoclonal |
| Conjugation | Unconjugated |
| Purification | Affinity purification |
| Dilution Range | WB 1:500-1:2000 IHC 1:200-1:1000 ELISA 1:10000 IF 1:50-200 |
| Formulation | Liquid in PBS containing 0.03% Sodium Azide, 0.5% BSA, 50% Glycerol. |
| Isotype | IgG1 |
| Molecular Weight | Calculated: 55kD |
| Storage Instruction | Store at -20°C for up to 1 year from the date of receipt, and avoid repeat freeze-thaw cycles. |

TARGET INFORMATION

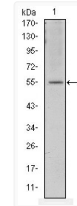
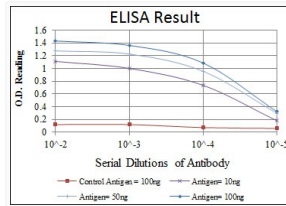
| | |
|-------------|---|
| Gene ID | 1386 |
| Gene Symbol | ATF2 |
| UniProt ID | ATF2_HUMAN |
| Specificity | ATF-2 Monoclonal Antibody detects endogenous levels of ATF-2 protein. |

ADDITIONAL INFORMATION

Note **STRICTLY FOR FURTHER SCIENTIFIC RESEARCH USE ONLY (RUO). MUST NOT TO BE USED IN DIAGNOSTIC OR THERAPEUTIC APPLICATIONS.**



Immunohistochemistry analysis of paraffin-embedded lung cancer (left) and brain tissues (right) with DAB staining using ATF-2 monoclonal antibody.



Western blot analysis using ATF-2 monoclonal antibody against NIH/3T3 cell lysate.