

Anti-MAP3K5 antibody [2E4] (STJ97852)

GENERAL INFORMATION

Product Type	Primary antibodies
Applications	WB/IHC/IF/FC/ELISA
Host / Source	Mouse
Reactivity	Human

PRODUCT PROPERTIES

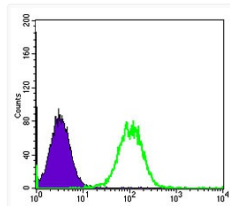
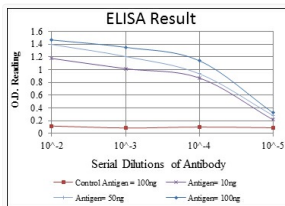
Clonality	Monoclonal
Conjugation	Unconjugated
Purification	Affinity purification
Dilution Range	WB 1:500-1:2000 IHC 1:200-1:1000 IF 1:200-1:1000 FC 1:200-1:400 ELISA 1:10000
Formulation	Liquid in PBS containing 0.03% Sodium Azide, 0.5% BSA, 50% Glycerol.
Isotype	IgG1
Molecular Weight	Calculated: 155kD
Storage Instruction	Store at -20°C for up to 1 year from the date of receipt, and avoid repeat freeze-thaw cycles.

TARGET INFORMATION

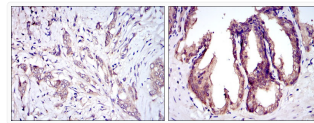
Gene ID	4217
Gene Symbol	MAP3K5
UniProt ID	M3K5_HUMAN
Specificity	ASK 1 Monoclonal Antibody detects endogenous levels of ASK 1 protein.

ADDITIONAL INFORMATION

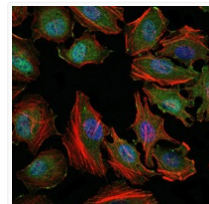
Note STRICTLY FOR FURTHER SCIENTIFIC RESEARCH USE ONLY (RUO). MUST NOT TO BE USED IN DIAGNOSTIC OR THERAPEUTIC APPLICATIONS.



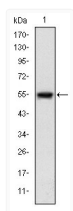
Flow cytometric analysis of HeLa cells using ASK 1 monoclonal antibody (green) and negative control (purple).



Immunohistochemistry analysis of paraffin-embedded breast cancer tissues (left) and prostate tissues (right) with DAB staining using ASK 1 monoclonal antibody.



Immunofluorescence analysis of HeLa cells using ASK 1 monoclonal antibody (green). Blue: DRAQ5 fluorescent DNA dye. Red: Actin filaments have been labeled with Alexa Fluor-555 phalloidin.



Western blot analysis using ASK 1 monoclonal antibody against recombinant protein.