

Anti-APOM antibody [8F12C6B8] (STJ97841)

GENERAL INFORMATION

Product Type	Primary antibodies
Applications	WB/IF/ELISA
Host / Source	Mouse
Reactivity	Human

PRODUCT PROPERTIES

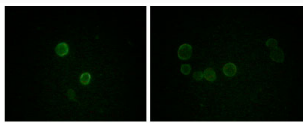
Clonality	Monoclonal
Concentration	1 mg/mL
Conjugation	Unconjugated
Purification	Affinity purification
Dilution Range	WB 1:500-1:2000 IF 1:200-1:1000 ELISA 1:10000
Formulation	Liquid in PBS containing 0.03% Sodium Azide.
Isotype	IgG1
Molecular Weight	Calculated: 21kD
Storage Instruction	Store at -20°C for up to 1 year from the date of receipt, and avoid repeat freeze-thaw cycles.

TARGET INFORMATION

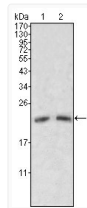
Gene ID	55937
Gene Symbol	APOM
UniProt ID	APOM_HUMAN
Specificity	ApoM Monoclonal Antibody detects endogenous levels of ApoM protein.

ADDITIONAL INFORMATION

Note **STRICTLY FOR FURTHER SCIENTIFIC RESEARCH USE ONLY (RUO). MUST NOT TO BE USED IN DIAGNOSTIC OR THERAPEUTIC APPLICATIONS.**



Immunofluorescence analysis of methanol-fixed L-02 (left) and Cos7 (right) cells using ApoM monoclonal antibody showing cytoplasmic and membrane localization.



Western blot analysis using ApoM monoclonal antibody against human serum (1, 2).