

Anti-ACTA2 antibody [4A4] (STJ97813)

GENERAL INFORMATION

Product Type	Primary antibodies
Applications	WB/IHC/IF/FC/ELISA
Host / Source	Mouse
Reactivity	Human/Mouse/Rat/Monkey

PRODUCT PROPERTIES

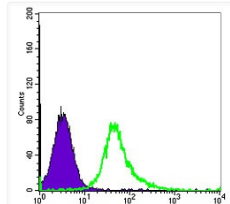
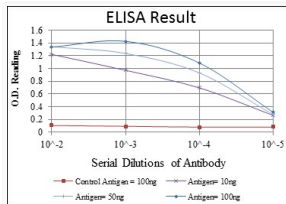
Clonality	Monoclonal
Conjugation	Unconjugated
Purification	Affinity purification
Dilution Range	WB 1:500-1:2000 IHC 1:200-1:1000 IF 1:200-1:1000 FC 1:200-1:400 ELISA 1:10000
Formulation	Liquid in PBS containing 0.03% Sodium Azide, 0.5% BSA, 50% Glycerol.
Isotype	IgG1
Molecular Weight	Calculated: 42kD
Storage Instruction	Store at -20°C for up to 1 year from the date of receipt, and avoid repeat freeze-thaw cycles.

TARGET INFORMATION

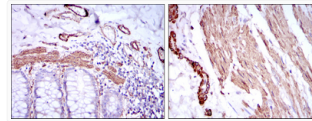
Gene ID	59
Gene Symbol	ACTA2
UniProt ID	ACTA_HUMAN
Specificity	ACTA2 Monoclonal Antibody detects endogenous levels of ACTA2 protein.

ADDITIONAL INFORMATION

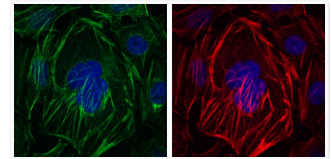
Note STRICTLY FOR FURTHER SCIENTIFIC RESEARCH USE ONLY (RUO). MUST NOT TO BE USED IN DIAGNOSTIC OR THERAPEUTIC APPLICATIONS.



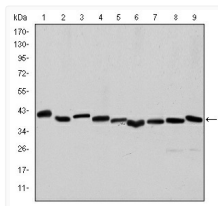
Flow cytometric analysis of HeLa cells using ACTA2 monoclonal antibody (green) and negative control (purple).



Immunohistochemistry analysis of paraffin-embedded human duodenum tissues (left) and human esophagus tissues (right) with DAB staining using ACTA2 monoclonal antibody.



Immunofluorescence analysis of HepG2 cells using ACTA2 monoclonal antibody (green). Red: Actin filaments have been labeled with Alexa Fluor-555 phalloidin. Blue: DRAQ5 fluorescent DNA dye.



Western blot analysis using ACTA2 monoclonal antibody against HeLa (1), A431 (2), Jurkat (3), K562 (4), HEK293 (5), HepG2 (6), NIH/3T3 (7), PC-12 (8) and Cos7 (9) cell lysate.