

Anti-ABCG2 antibody [3G8] (STJ97809)

GENERAL INFORMATION

Product Type	Primary antibodies
Applications	WB/IHC/IF/FC/ELISA
Host / Source	Mouse
Reactivity	Human/Mouse/Monkey

PRODUCT PROPERTIES

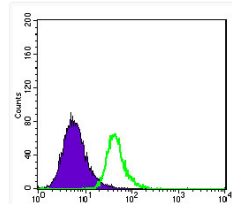
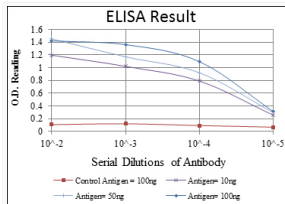
Clonality	Monoclonal
Conjugation	Unconjugated
Purification	Affinity purification
Dilution Range	WB 1:500-1:2000 IHC 1:200-1:1000 IF 1:200-1:1000 FC 1:200-1:400 ELISA 1:10000
Formulation	Liquid in PBS containing 0.03% Sodium Azide, 0.5% BSA, 50% Glycerol.
Isotype	IgG1
Molecular Weight	Calculated: 72kD
Storage Instruction	Store at -20°C for up to 1 year from the date of receipt, and avoid repeat freeze-thaw cycles.

TARGET INFORMATION

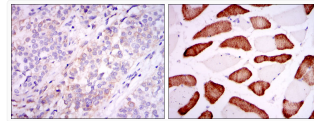
Gene ID	9429
Gene Symbol	ABCG2
UniProt ID	ABCG2_HUMAN
Specificity	ABCG2 Monoclonal Antibody detects endogenous levels of ABCG2 protein.

ADDITIONAL INFORMATION

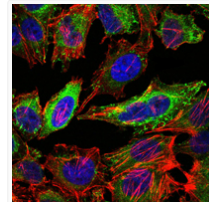
Note **STRICTLY FOR FURTHER SCIENTIFIC RESEARCH USE ONLY (RUO). MUST NOT TO BE USED IN DIAGNOSTIC OR THERAPEUTIC APPLICATIONS.**



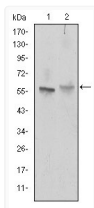
Flow cytometric analysis of HepG2 cells using ABCG2 monoclonal antibody (green) and negative control (purple).



Immunohistochemistry analysis of paraffin-embedded bladder cancer tissues (left) and skeletal muscle tissues (right) with DAB staining using ABCG2 monoclonal antibody.



Immunofluorescence analysis of HeLa cells using ABCG2 monoclonal antibody (green). Blue: DRAQ5 fluorescent DNA dye. Red: Actin filaments have been labeled with Alexa Fluor-555 phalloidin.



Western blot analysis using ABCG2 monoclonal antibody against NIH/3T3 (1) and Cos7 (2) cell lysate.