

## Anti-EIF4EBP1 antibody [11G12C11] (STJ97805)

### GENERAL INFORMATION

Product Type	Primary antibodies
Applications	WB/IHC/IF/ELISA
Host / Source	Mouse
Reactivity	Human

### PRODUCT PROPERTIES

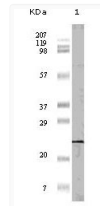
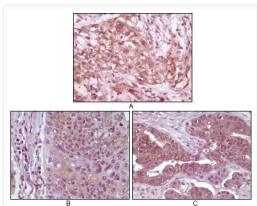
Clonality	Monoclonal
Concentration	1 mg/mL
Conjugation	Unconjugated
Purification	Affinity purification
Dilution Range	WB 1:500-1:2000 IHC 1:200-1:1000 ELISA 1:10000 IF 1:50-200
Formulation	Liquid in PBS containing 0.03% Sodium Azide.
Isotype	IgG1
Molecular Weight	Calculated: 13kD
Storage Instruction	Store at -20°C for up to 1 year from the date of receipt, and avoid repeat freeze-thaw cycles.

### TARGET INFORMATION

Gene ID	<a href="#">1978</a>
Gene Symbol	<a href="#">EIF4EBP1</a>
UniProt ID	<a href="#">4EBP1_HUMAN</a>
Specificity	4E-BP1 Monoclonal Antibody detects endogenous levels of 4E-BP1 protein.

### ADDITIONAL INFORMATION

Note STRICTLY FOR FURTHER SCIENTIFIC RESEARCH USE ONLY (RUO). MUST NOT TO BE USED IN DIAGNOSTIC OR THERAPEUTIC APPLICATIONS.



Immunohistochemistry analysis of paraffin-embedded human pancreas carcinoma (A), esophagus carcinoma tissue (B) and ovary tumor tissue, showing cytoplasmic and membrane localization with DAB staining using 4E-BP1 monoclonal antibody.

Western blot analysis using 4E-BP1 monoclonal antibody against truncated 4E-BP1 recombinant protein (1).