

## Anti-Luciferase antibody [6B8] (STJ97752)

### GENERAL INFORMATION

Product Type	Primary antibodies
Applications	IF/WB
Host / Source	Mouse
Reactivity	Firefly

### PRODUCT PROPERTIES

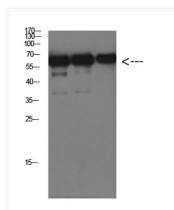
Clonality	Monoclonal
Concentration	1 mg/mL
Conjugation	Unconjugated
Purification	The antibody was affinity-purified from mouse ascites by affinity-chromatography using specific immunogen.
Dilution Range	IF 1:50-200 WB 1:1000-2000
Formulation	Liquid in PBS containing 50% Glycerol, 0.5% BSA and 0.02% Sodium Azide.
Isotype	IgG1
Molecular Weight	Observed: 60kD
Storage Instruction	Store at -20°C for up to 1 year from the date of receipt, and avoid repeat freeze-thaw cycles.

### TARGET INFORMATION

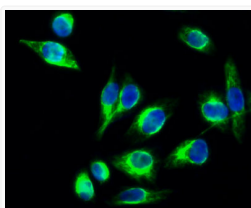
Specificity	Luciferase protein detects endogenous levels of Luciferase
-------------	--

### ADDITIONAL INFORMATION

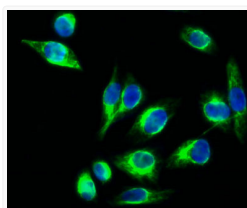
Note STRICTLY FOR FURTHER SCIENTIFIC RESEARCH USE ONLY (RUO). MUST NOT TO BE USED IN DIAGNOSTIC OR THERAPEUTIC APPLICATIONS.



Western blot analysis of over-expressed Luciferase protein using antibody diluted at 1:1000



Immunofluorescence analysis of HepG2 cells. Antibody diluted at 1:50. The picture on the right is blocked with the synthesized peptide.



Immunofluorescence analysis of HEK293T cells transfected with Luciferase. 1, Luciferase Mouse monoclonal antibody (6B8) (green) was diluted at 1:200 (4°C, overnight). 2, Dylight 488 labeled Secondary antibody was diluted at 1:300 room temperature, 30min. DAPI (blue) 10min.