

## Anti-GSK3B antibody (1-100 aa) [1A6] (STJ97739)

### GENERAL INFORMATION

Product Type	Primary antibodies
Applications	WB/IHC/IF
Host / Source	Mouse
Reactivity	Human/Rat/Mouse

### PRODUCT PROPERTIES

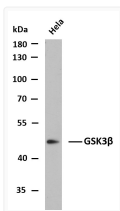
Clonality	Monoclonal
Concentration	1 mg/mL
Conjugation	Unconjugated
Purification	The antibody was affinity-purified from mouse ascites by affinity-chromatography using specific immunogen.
Dilution Range	WB 1:1000-2000 IHC 1:100-200 IF 1:50-200
Formulation	Liquid in PBS containing 50% Glycerol, 0.5% BSA and 0.02% Sodium Azide.
Isotype	IgG1k
Molecular Weight	Calculated: 46kD Observed: 42kD
Storage Instruction	Store at -20°C for up to 1 year from the date of receipt, and avoid repeat freeze-thaw cycles.

### TARGET INFORMATION

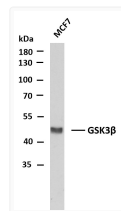
Gene ID	<a href="#">2932</a>
Gene Symbol	<a href="#">GSK3B</a>
UniProt ID	<a href="#">GSK3B_HUMAN</a>
Immunogen Region	1-100 aa
Specificity	GSK3 Beta protein detects endogenous levels of GSK3B

### ADDITIONAL INFORMATION

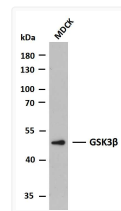
Note STRICTLY FOR FURTHER SCIENTIFIC RESEARCH USE ONLY (RUO). MUST NOT TO BE USED IN DIAGNOSTIC OR THERAPEUTIC APPLICATIONS.



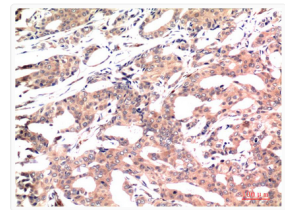
Western Blot (WB): Whole cell lysates of HeLa were separated by 10% SDS-PAGE, and the membrane was blotted with STJ97739



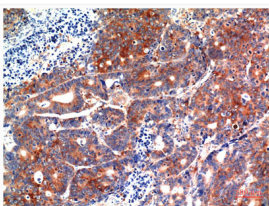
Western Blot (WB): Whole cell lysates of MCF7 were separated by 10% SDS-PAGE, and the membrane was blotted with STJ97739



Western Blot (WB): Whole cell lysates of MDCK were separated by 10% SDS-PAGE, and the membrane was blotted with STJ97739



Immunohistochemical analysis of paraffin-embedded human breast carcinoma tissue using GSK3β Mouse mAb diluted at 1:200. STJ97739



Immunohistochemical analysis of paraffin-embedded human stomach carcinoma tissue using GSK3β Mouse mAb diluted at 1:200. STJ97739