

## Anti-Phospho-ERK-Y222/205 antibody (140-220 aa) [4G3] (STJ97738)

### GENERAL INFORMATION

Product Type	Primary antibodies
Applications	IHC/IF
Host / Source	Mouse
Reactivity	Human/Rat/Mouse

### PRODUCT PROPERTIES

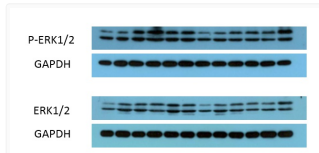
Clonality	Monoclonal
Concentration	1 mg/mL
Conjugation	Unconjugated
Purification	The antibody was affinity-purified from mouse ascites by affinity-chromatography using specific immunogen.
Dilution Range	IHC-P 1:100-200 IF 1:50-200
Formulation	Liquid in PBS containing 50% Glycerol, 0.5% BSA and 0.02% Sodium Azide.
Isotype	IgG1
Molecular Weight	Observed: 44, 42kD
Storage Instruction	Store at -20°C for up to 1 year from the date of receipt, and avoid repeat freeze-thaw cycles.

### TARGET INFORMATION

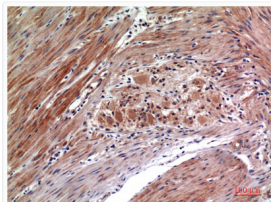
Gene ID	<a href="#">5595</a> <a href="#">5594</a>
Gene Symbol	<a href="#">MAPK3</a> <a href="#">MAPK1</a>
UniProt ID	<a href="#">MK03_HUMAN</a> <a href="#">MK01_HUMAN</a>
Immunogen Region	140-220 aa
Specificity	Phospho-ERK 1/2 (Y222/205) protein detects endogenous levels of MAPK1/MAPK3

### ADDITIONAL INFORMATION

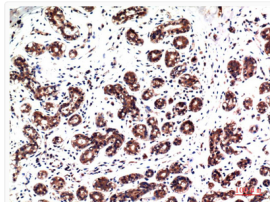
Note: STRICTLY FOR FURTHER SCIENTIFIC RESEARCH USE ONLY (RUO). MUST NOT TO BE USED IN DIAGNOSTIC OR THERAPEUTIC APPLICATIONS.



Western Blot (WB): The picture was kindly provided by our customer. The primary antibody was diluted at 1:2000. The STJ97738



Immunohistochemical analysis of paraffin-embedded human colon carcinoma tissue using Phospho-ERK1/2 Y202/205 Mouse mAb STJ97738



Immunohistochemical analysis of paraffin-embedded human breast carcinoma tissue using Phospho-ERK1/2 Y222/205 mouse mAb STJ97738