

Anti-CMTM8 antibody (101-150 aa) (STJ97681)

GENERAL INFORMATION

| | |
|---------------|--------------------|
| Product Type | Primary antibodies |
| Applications | WB/IHC/IF/ELISA |
| Host / Source | Rabbit |
| Reactivity | Human/Rat/Mouse |

PRODUCT PROPERTIES

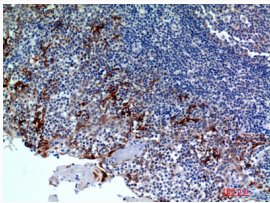
| | |
|---------------------|---|
| Clonality | Polyclonal |
| Concentration | 1 mg/mL |
| Conjugation | Unconjugated |
| Purification | The antibody was affinity-purified from rabbit antiserum by affinity-chromatography using epitope-specific immunogen. |
| Dilution Range | WB 1:500-1:2000 IHC-P 1:100-1:300 ELISA 1:10000 IF 1:50-200 |
| Formulation | Liquid in PBS containing 50% Glycerol, 0.5% BSA and 0.02% Sodium Azide. |
| Isotype | IgG |
| Molecular Weight | Observed: 20kD |
| Storage Instruction | Store at -20°C for up to 1 year from the date of receipt, and avoid repeat freeze-thaw cycles. |

TARGET INFORMATION

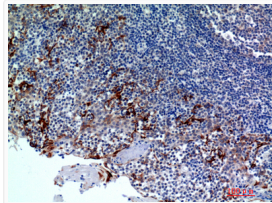
| | |
|------------------|---|
| Gene ID | 152189 |
| Gene Symbol | CMTM8 |
| UniProt ID | CKLF8_HUMAN |
| Immunogen Region | 101-150 aa |
| Specificity | CMTM8 Polyclonal Antibody detects endogenous levels of CMTM8 protein. |

ADDITIONAL INFORMATION

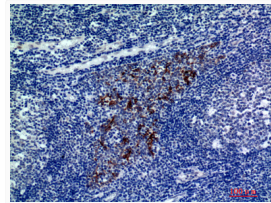
Note STRICTLY FOR FURTHER SCIENTIFIC RESEARCH USE ONLY (RUO). MUST NOT TO BE USED IN DIAGNOSTIC OR THERAPEUTIC APPLICATIONS.



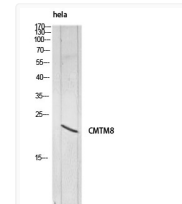
Immunohistochemical analysis of paraffin-embedded human-tonsils2, antibody was diluted at 1:100



Immunohistochemical analysis of paraffin-embedded human-tonsils, antibody was diluted at 1:200



Immunohistochemical analysis of paraffin-embedded human-tonsils, antibody was diluted at 1:200



Western blot analysis of hela lysis using CMTM8 antibody.. Secondary antibody was diluted at 1:20000