

Anti-Cleaved-CASP8-S217 antibody (170-250 aa) (STJ97641)

GENERAL INFORMATION

Product Type	Primary antibodies
Applications	WB/ELISA
Host / Source	Rabbit
Reactivity	Human/Rat/Mouse

PRODUCT PROPERTIES

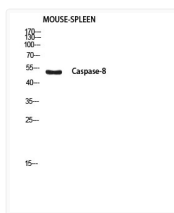
Clonality	Polyclonal
Concentration	1 mg/mL
Conjugation	Unconjugated
Purification	The antibody was affinity-purified from rabbit antiserum by affinity-chromatography using epitope-specific immunogen.
Dilution Range	WB 1:500-1:2000 ELISA 1:10000
Formulation	Liquid in PBS containing 50% Glycerol, 0.5% BSA and 0.02% Sodium Azide.
Isotype	IgG
Molecular Weight	Observed: 18kD, 54kD
Storage Instruction	Store at -20°C for up to 1 year from the date of receipt, and avoid repeat freeze-thaw cycles.

TARGET INFORMATION

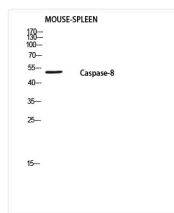
Gene ID	841
Gene Symbol	CASP8
UniProt ID	CASP8_HUMAN
Immunogen Region	170-250 aa
Specificity	Cleaved-Caspase-8 p18 (S217) Polyclonal Antibody detects endogenous levels of Cleaved-Caspase-8 p18 (S217) protein.

ADDITIONAL INFORMATION

Note: STRICTLY FOR FURTHER SCIENTIFIC RESEARCH USE ONLY (RUO). MUST NOT TO BE USED IN DIAGNOSTIC OR THERAPEUTIC APPLICATIONS.



Western blot analysis of mouse spleen using Cleaved-Caspase-8 p18 (S217) antibody. Antibody was diluted at 1:1000. Secondary antibody was diluted at 1:20000



Western blot analysis of mouse spleen using Caspase-8 P18 antibody. Antibody was diluted at 1:1000. Secondary antibody was diluted at 1:20000