

Anti-Acetyl-TUBA1B-4A8 antibody [4A8] (STJ97537)

GENERAL INFORMATION

Product Type	Primary antibodies
Applications	WB/IF/IHC
Host / Source	Mouse
Reactivity	Human/Rat/Mouse/D.melanogaster

PRODUCT PROPERTIES

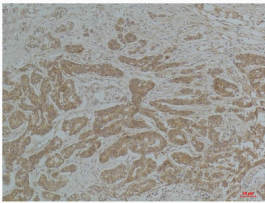
Clonality	Monoclonal
Concentration	1 mg/mL
Conjugation	Unconjugated
Purification	The antibody was affinity-purified from mouse ascites by affinity-chromatography using specific immunogen.
Dilution Range	WB 1:1000-2000 IHC 1:50-100 IF 1:200
Formulation	Liquid in PBS containing 50% Glycerol, 0.5% BSA and 0.02% Sodium Azide.
Isotype	IgG1
Molecular Weight	Observed: 52kD
Storage Instruction	Store at -20°C for up to 1 year from the date of receipt, and avoid repeat freeze-thaw cycles.

TARGET INFORMATION

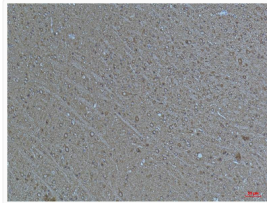
Gene ID	10376
Gene Symbol	TUBA1B
UniProt ID	TBA1B_HUMAN
Specificity	Alpha-tubulin (Acetyl Lys40) protein detects endogenous levels of Alpha-tubulin (Acetyl Lys40)

ADDITIONAL INFORMATION

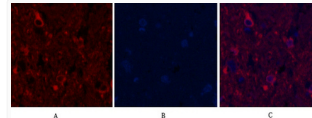
Note STRICTLY FOR FURTHER SCIENTIFIC RESEARCH USE ONLY (RUO). MUST NOT TO BE USED IN DIAGNOSTIC OR THERAPEUTIC APPLICATIONS.



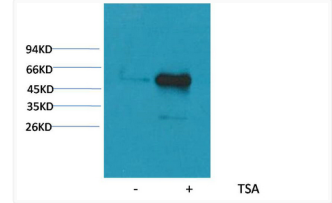
Immunohistochemical analysis of paraffin-embedded Human Breast Carcinoma using a-tubulin (Acetyl Lys40) Mouse mAb diluted at 1:200.



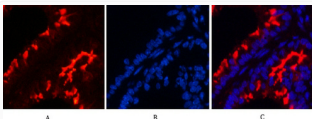
Immunohistochemical analysis of paraffin-embedded Mouse Brain Tissue using a-tubulin (Acetyl Lys40) Mouse mAb diluted at 1:200.



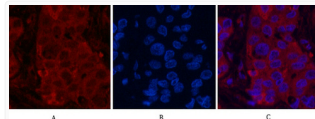
Immunofluorescence analysis of Rat-spinal-cord tissue. 1, Alpha-tubulin (Acetyl Lys40) monoclonal antibody (4A8) (red) was diluted at 1:200 (4°C, overnight). 2, Cy3 labeled Secondary antibody was diluted at 1:300 (room temperature, 50min). 3, Picture B: DAPI (blue) 10min. Picture A: Target. Picture B: DAPI. Picture C: merge of A+B



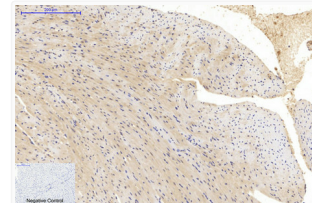
Western blot analysis of extracts from Hela cells, untreated (-) or treated with TSA (1 Mu M, 18 hr; +), using Acetyl-a-tubulin (Lys40) Mouse mAb 1:2000.



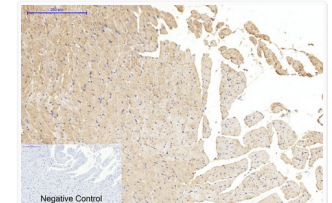
Immunofluorescence analysis of Mouse-lung tissue. 1, Alpha-tubulin (Acetyl Lys40) monoclonal antibody (4A8) (red) was diluted at 1:200 (4°C, overnight). 2, Cy3 labeled Secondary antibody was diluted at 1:300 (room temperature, 50min). 3, Picture B: DAPI (blue) 10min. Picture A: Target. Picture B: DAPI. Picture C: merge of A+B



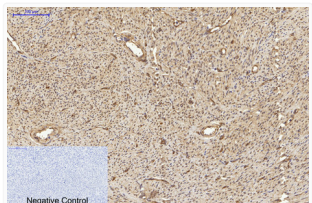
Immunofluorescence analysis of Human-liver-cancer tissue. 1, Alpha-tubulin (Acetyl Lys40) monoclonal antibody (4A8) (red) was diluted at 1:200 (4°C, overnight). 2, Cy3 labeled Secondary antibody was diluted at 1:300 (room temperature, 50min). 3, Picture B: DAPI (blue) 10min. Picture A: Target. Picture B: DAPI. Picture C: merge of A+B



Immunohistochemical analysis of paraffin-embedded Mouse-heart tissue. 1, Alpha-tubulin (Acetyl Lys40) monoclonal antibody (4A8) was diluted at 1:200 (4°C, overnight). 2, Sodium citrate pH 6.0 was used for antibody retrieval (>98°C, 20min). 3, Secondary antibody was diluted at 1:200 (room temperature, 30min). Negative control was used by secondary antibody only.



Immunohistochemical analysis of paraffin-embedded Rat-heart tissue. 1, Alpha-tubulin (Acetyl Lys40) monoclonal antibody (4A8) was diluted at 1:200 (4°C, overnight). 2, Sodium citrate pH 6.0 was used for antibody retrieval (>98°C, 20min). 3, Secondary antibody was diluted at 1:200 (room temperature, 30min). Negative control was used by secondary antibody only.



Immunohistochemical analysis of paraffin-embedded Human-uterus tissue. 1, Alpha-tubulin (Acetyl Lys40) monoclonal antibody (4A8) was diluted at 1:200 (4°C, overnight). 2, Sodium citrate pH 6.0 was used for antibody retrieval (>98°C, 20min). 3, Secondary antibody was diluted at 1:200 (room temperature, 30min). Negative control was used by secondary antibody only.

FOR RESEARCH USE ONLY. Not intended for diagnostic or therapeutic use.

St Johns Laboratory Ltd, Knowledge Dock Business Centre, University Way, London, E16 2RD | Tel: 0208 223 3081