

Anti-ABCG2 antibody (289-338 aa) (STJ97515)

GENERAL INFORMATION

Product Type	Primary antibodies
Applications	WB/IHC/IF/ELISA
Host / Source	Rabbit
Reactivity	Human/Rat/Mouse

PRODUCT PROPERTIES

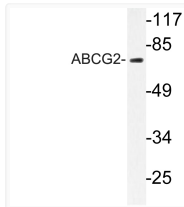
Clonality	Polyclonal
Concentration	1 mg/mL
Conjugation	Unconjugated
Purification	The antibody was affinity-purified from rabbit antiserum by affinity-chromatography using epitope-specific immunogen.
Dilution Range	WB 1:500-1:2000 IHC-P 1:100-300 ELISA 1:20000 IF 1:100-300
Formulation	Liquid in PBS containing 50% Glycerol, 0.5% BSA and 0.02% Sodium Azide.
Isotype	IgG
Molecular Weight	Observed: 72kD
Storage Instruction	Store at -20°C for up to 1 year from the date of receipt, and avoid repeat freeze-thaw cycles.

TARGET INFORMATION

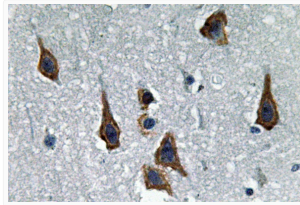
Gene ID	9429
Gene Symbol	ABCG2
UniProt ID	ABCG2_HUMAN
Immunogen Region	289-338 aa
Specificity	ABCG2 Polyclonal Antibody detects endogenous levels of ABCG2 protein.

ADDITIONAL INFORMATION

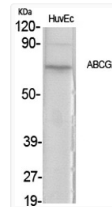
Note STRICTLY FOR FURTHER SCIENTIFIC RESEARCH USE ONLY (RUO). MUST NOT TO BE USED IN DIAGNOSTIC OR THERAPEUTIC APPLICATIONS.



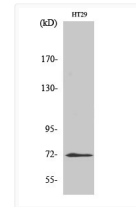
Western blot analysis of lysate from HT-29 cells, using ABCG2 antibody.



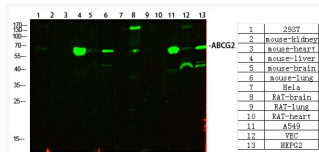
Immunohistochemistry analysis of paraffin-embedded human brain, using ABCG2 Antibody. The picture on the right is blocked with the ABCG2 peptide.



Western blot analysis of various cells using ABCG2 Polyclonal Antibody



Western blot analysis of HT29 cells using ABCG2 Polyclonal Antibody



Western blot analysis of various cells using primary antibody diluted at 1:1000 (4°C overnight). Secondary antibody: Goat Anti-rabbit IgG IRDye 800 (diluted at 1:5000, 25°C, 1 hour)