

## Anti-HSP90AA1 antibody (660-740 aa) [1F6] (STJ97496)

### GENERAL INFORMATION

|               |                    |
|---------------|--------------------|
| Product Type  | Primary antibodies |
| Applications  | WB/IHC/IF          |
| Host / Source | Mouse              |
| Reactivity    | Human/Rat/Mouse    |

### PRODUCT PROPERTIES

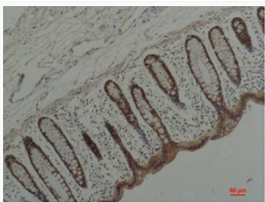
|                     |  |
|---------------------|--|
| Clonality           | Monoclonal   |
| Concentration       | 1 mg/mL  |
| Conjugation         | Unconjugated   |
| Purification        | The antibody was affinity-purified from mouse antiserum by affinity-chromatography using epitope-specific immunogen. |
| Dilution Range      | WB 1:500-1:2000<br>IHC 1:100-1:300<br>ELISA 1:40000<br>IF 1:50-200   |
| Formulation         | Liquid in PBS containing 50% Glycerol, 0.5% BSA and 0.02% Sodium Azide.  |
| Isotype             | IgG1   |
| Molecular Weight    | Observed: 95kD   |
| Storage Instruction | Store at -20°C for up to 1 year from the date of receipt, and avoid repeat freeze-thaw cycles.                       |

### TARGET INFORMATION

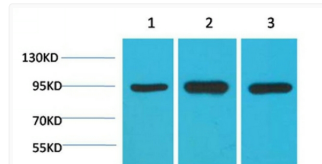
|                  |   |
|------------------|---|
| Gene ID          | <a href="#">3320</a>                                |
| Gene Symbol      | <a href="#">HSP90AA1</a>                            |
| UniProt ID       | <a href="#">HS90A_HUMAN</a>                         |
| Immunogen Region | 660-740 aa  |
| Specificity      | The antibody detects endogenous HSP90 Alpha protein |

### ADDITIONAL INFORMATION

Note STRICTLY FOR FURTHER SCIENTIFIC RESEARCH USE ONLY (RUO). MUST NOT TO BE USED IN DIAGNOSTIC OR THERAPEUTIC APPLICATIONS.



Immunohistochemical analysis of paraffin-embedded Human Colon Carcinoma using HSP90 Alpha Mouse mAb diluted at 1:200.



Western blot analysis of 1) Hela, 2) Mouse Brain Tissue, 3) Rat Brain Tissue with HSP90 a Mouse mAb diluted at 1:2, 000.