

Anti-Acetyl-Lysine antibody [10B10] (STJ97466)

GENERAL INFORMATION

Product Type	Primary antibodies
Applications	WB/IHC/IF/IP
Host / Source	Mouse
Reactivity	Species independent

PRODUCT PROPERTIES

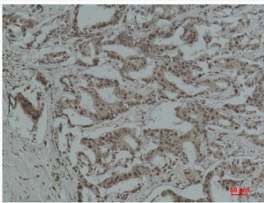
Clonality	Monoclonal
Conjugation	Unconjugated
Purification	The antibody was affinity-purified from mouse ascites by affinity-chromatography using epitope-specific immunogen.
Dilution Range	WB 1:1000-2000 IHC 1:200-500 IP 1:100-200 IF 1:50-200
Formulation	Liquid in PBS pH7.4, 0.5% BSA, 0.02% Sodium Azide and 50% Glycerol.
Isotype	IgG1
Storage Instruction	Store at -20°C for up to 1 year from the date of receipt, and avoid repeat freeze-thaw cycles.

TARGET INFORMATION

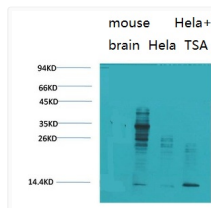
Specificity	The antibody detects endogenous Acetyl Lysine protein.
-------------	--

ADDITIONAL INFORMATION

Note STRICTLY FOR FURTHER SCIENTIFIC RESEARCH USE ONLY (RUO). MUST NOT TO BE USED IN DIAGNOSTIC OR THERAPEUTIC APPLICATIONS.



Immunohistochemical analysis of paraffin-embedded Human Breast Carcinoma using Acetyl Lysine monoclonal antibody.



Western blot analysis of 1) Mouse Brain Tissue, 2) HeLa, 3) HeLa+TSA Treated using Acetyl Lysine monoclonal antibody.