

Anti-Phospho-Serine antibody [5B12] (STJ97457)

GENERAL INFORMATION

Product Type	Primary antibodies
Applications	WB/IHC/IF/IP
Host / Source	Mouse
Reactivity	Species independent

PRODUCT PROPERTIES

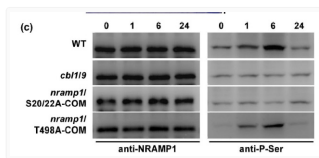
Clonality	Monoclonal
Conjugation	Unconjugated
Purification	The antibody was affinity-purified from mouse ascites by affinity-chromatography using epitope-specific immunogen.
Dilution Range	WB 1:500-1:2000 IHC 1:100-1:300 ELISA 1:40000 IP 1:50-200 IF 1:50-200
Formulation	Liquid in PBS pH7.4, 0.5% BSA, 0.02% Sodium Azide and 50% Glycerol.
Isotype	IgG1
Storage Instruction	Store at -20°C for up to 1 year from the date of receipt, and avoid repeat freeze-thaw cycles.

TARGET INFORMATION

Specificity	The antibody detects endogenous Phosphoserine protein.
-------------	--

ADDITIONAL INFORMATION

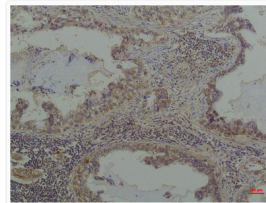
Note STRICTLY FOR FURTHER SCIENTIFIC RESEARCH USE ONLY (RUO). MUST NOT TO BE USED IN DIAGNOSTIC OR THERAPEUTIC APPLICATIONS.



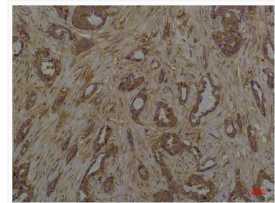
CBL1/9–CIPK23–NRAMP1 axis regulates manganese toxicity. Cun Wang WB Arabidopsis thaliana seedling STJ97457



Western blot analysis of 1) HeLa, 2) Rat Brain Tissue, 3) Mouse Brain Tissue with Phosphoserine Mouse mAb diluted at STJ97457



Immunohistochemical analysis of paraffin-embedded Human Lung Carcinoma using Phosphoserine Mouse mAb diluted at 1:200. STJ97457



Immunohistochemical analysis of paraffin-embedded human breast carcinoma using Phosphoserine Mouse mAb diluted at 1:200. STJ97457