

Anti-CASP3 antibody [5E1] (STJ97448)

GENERAL INFORMATION

Product Type	Primary antibodies
Applications	IF/WB/IP/IHC
Host / Source	Mouse
Reactivity	Human/Mouse/Rat/Chicken

PRODUCT PROPERTIES

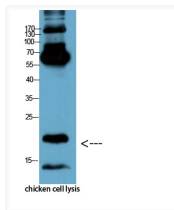
Clonality	Monoclonal
Conjugation	Unconjugated
Purification	The antibody was affinity-purified from mouse ascites by affinity-chromatography using epitope-specific immunogen.
Dilution Range	IF 1:50-200 WB 1:500-1000 IHC 1:100-200
Formulation	Liquid in PBS pH7.4, 0.5% BSA, 0.02% Sodium Azide and 50% Glycerol.
Isotype	IgG1
Molecular Weight	Observed: 17kD
Storage Instruction	Store at -20°C for up to 1 year from the date of receipt, and avoid repeat freeze-thaw cycles.

TARGET INFORMATION

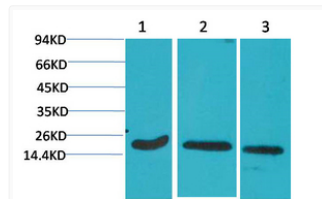
Gene ID	836
Gene Symbol	CASP3
UniProt ID	CASP3_HUMAN
Specificity	The antibody detects endogenous cleaved Caspase-3 protein p17 isoform.

ADDITIONAL INFORMATION

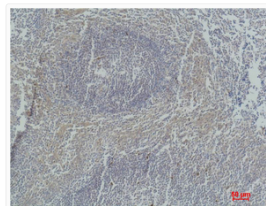
Note STRICTLY FOR FURTHER SCIENTIFIC RESEARCH USE ONLY (RUO). MUST NOT TO BE USED IN DIAGNOSTIC OR THERAPEUTIC APPLICATIONS.



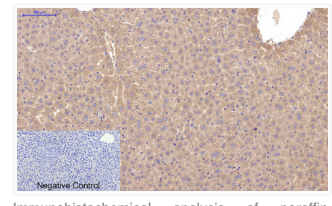
Western blot analysis of chicken cell lysis using Antibody diluted at 1:1000



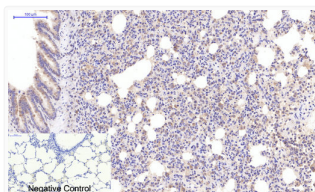
Western blot analysis of 1) HeLa, 2) 3T3, 3) Rat Brain Tissue using Active Caspase-3 monoclonal antibody.



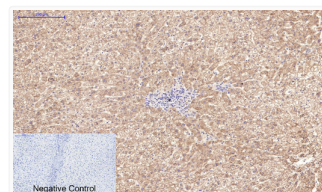
Immunohistochemical analysis of paraffin-embedded Human Tonsil Tissue using Active Caspase-3 monoclonal antibody.



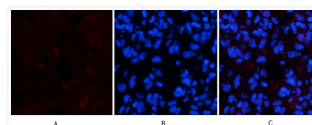
Immunohistochemical analysis of paraffin-embedded Mouse-liver tissue. 1, Active Caspase-3 monoclonal antibody (5E1) was diluted at 1:200 (4°C, overnight). 2, Sodium citrate pH 6.0 was used for antibody retrieval (>98°C, 20min). 3, Secondary antibody was diluted at 1:200 (room temperature, 30min). Negative control was used by secondary antibody only.



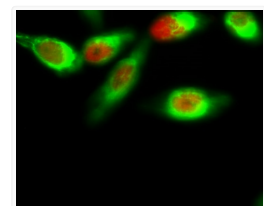
Immunohistochemical analysis of paraffin-embedded Rat-lung tissue. 1, Active Caspase-3 monoclonal antibody (5E1) was diluted at 1:200 (4°C, overnight). 2, Sodium citrate pH 6.0 was used for antibody retrieval (>98°C, 20min). 3, Secondary antibody was diluted at 1:200 (room temperature, 30min). Negative control was used by secondary antibody only.



Immunohistochemical analysis of paraffin-embedded Human-liver tissue. 1, Active Caspase-3 monoclonal antibody (5E1) was diluted at 1:200 (4°C, overnight). 2, Sodium citrate pH 6.0 was used for antibody retrieval (>98°C, 20min). 3, Secondary antibody was diluted at 1:200 (room temperature, 30min). Negative control was used by secondary antibody only.



Immunofluorescence analysis of rat-lung tissue. 1, Active Caspase-3 monoclonal antibody (5E1) (red) was diluted at 1:200 (4°C, overnight). 2, Cy3 labeled Secondary antibody was diluted at 1:300 (room temperature, 50min). 3, Picture B: DAPI (blue) 10min. Picture A: Target. Picture C: merge of A+B



Immunofluorescence analysis of HeLa cell. 1, FoxO1 (phospho Ser256) Polyclonal Antibody (red) was diluted at 1:200 (4°C overnight). Active Caspase-3 monoclonal antibody (5E1) (green) was diluted at 1:200 (4°C overnight). 2, Goat Anti Rabbit Alexa Fluor 594 Catalog: (NA was diluted at 1:1000 (room temperature, 50min). Goat Anti Mouse Alexa Fluor 488 Catalog: (NA was diluted at 1:1000 (room temperature, 50min).