

Anti-CYCS antibody [4B10] (STJ97419)

GENERAL INFORMATION

Product Type	Primary antibodies
Applications	WB/IF/IHC
Host / Source	Mouse
Reactivity	Human/Mouse/Rat/Chicken

PRODUCT PROPERTIES

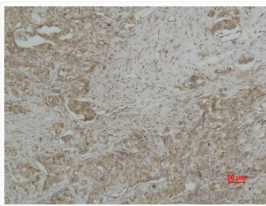
Clonality	Monoclonal
Conjugation	Unconjugated
Purification	The antibody was affinity-purified from mouse ascites by affinity-chromatography using epitope-specific immunogen.
Dilution Range	WB 1:1000-5000 IHC 1:500-1000 IF 1:200
Formulation	Liquid in PBS pH7.4, 0.5% BSA, 0.02% Sodium Azide and 50% Glycerol.
Isotype	IgG1
Molecular Weight	Observed: 14kD
Storage Instruction	Store at -20°C for up to 1 year from the date of receipt, and avoid repeat freeze-thaw cycles.

TARGET INFORMATION

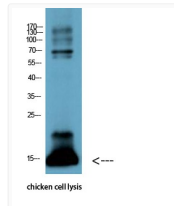
Gene ID	54205
Gene Symbol	CYCS
UniProt ID	CYC_HUMAN
Specificity	The antibody detects endogenous CYCS protein.

ADDITIONAL INFORMATION

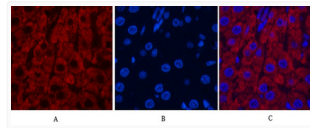
Note **STRICTLY FOR FURTHER SCIENTIFIC RESEARCH USE ONLY (RUO). MUST NOT TO BE USED IN DIAGNOSTIC OR THERAPEUTIC APPLICATIONS.**



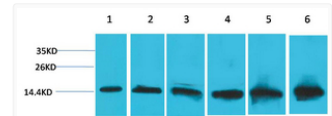
Immunohistochemical analysis of paraffin-embedded human Breast carcinoma using CYCS monoclonal antibody.



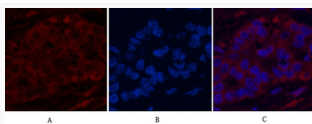
Western blot analysis of chicken cell lysis using Antibody diluted at 1:1000



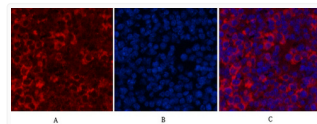
Immunofluorescence analysis of Rat-liver tissue. 1, CYCS monoclonal antibody (4B10) (red) was diluted at 1:200 (4°C, overnight). 2, Cy3 labeled Secondary antibody was diluted at 1:300 (room temperature, 50min).3, Picture B: DAPI (blue) 10min. Picture A:Target. Picture B: DAPI. Picture C: merge of A+B



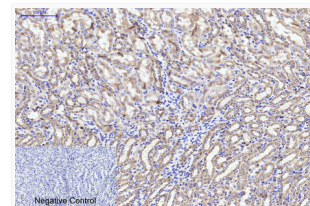
Western blot analysis of 1) Hela, 2) 293T, 3) 3T3, 4) Mouse Liver Tissue, 5) Rat Liver Tissue, 6) Rat Kidney Tissue using CYCS monoclonal antibody.



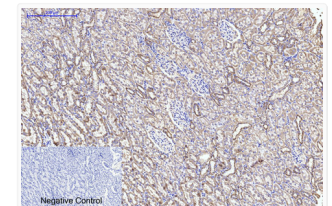
Immunofluorescence analysis of Human-liver-cancer tissue. 1, CYCS monoclonal antibody (4B10) (red) was diluted at 1:200 (4°C, overnight). 2, Cy3 labeled Secondary antibody was diluted at 1:300 (room temperature, 50min).3, Picture B: DAPI (blue) 10min. Picture A:Target. Picture B: DAPI. Picture C: merge of A+B



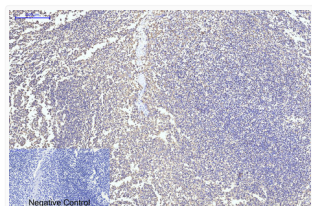
Immunofluorescence analysis of Mouse-spleen tissue. 1, CYCS monoclonal antibody (4B10) (red) was diluted at 1:200 (4°C, overnight). 2, Cy3 labeled Secondary antibody was diluted at 1:300 (room temperature, 50min).3, Picture B: DAPI (blue) 10min. Picture A:Target. Picture B: DAPI. Picture C: merge of A+B



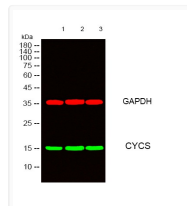
Immunohistochemical analysis of paraffin-embedded Mouse-kidney tissue. 1, CYCS monoclonal antibody (4B10) was diluted at 1:200 (4°C, overnight). 2, Sodium citrate pH 6.0 was used for antibody retrieval (>98°C, 20min). 3, Secondary antibody was diluted at 1:200 (room temperature, 30min). Negative control was used by secondary antibody only.



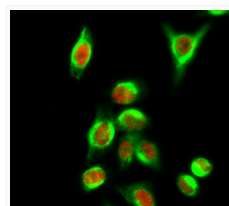
Immunohistochemical analysis of paraffin-embedded Rat-kidney tissue. 1, CYCS monoclonal antibody (4B10) was diluted at 1:200 (4°C, overnight). 2, Sodium citrate pH 6.0 was used for antibody retrieval (>98°C, 20min). 3, Secondary antibody was diluted at 1:200 (room temperature, 30min). Negative control was used by secondary antibody only.



Immunohistochemical analysis of paraffin-embedded Human-Tonsil tissue. 1, CYCS monoclonal antibody (4B10) was diluted at 1:200 (4°C, overnight). 2, Sodium citrate pH 6.0 was used for antibody retrieval (>98°C, 20min). 3, Secondary antibody was diluted at 1:200 (room temperature, 30min). Negative control was used by secondary antibody only.



Western blot analysis of lysates from 1) HeLa, 2) 293T, 3) 3T3, cells, (Green) primary antibody was diluted at 1:1000, 4°C over night, secondary antibody (cat: NA) was diluted at 1:10000, 37°C 1hour. (Red) GAPDH Polyclonal Antibody (cat: (STJ97090) antibody was diluted at 1:5000 as loading control, 4°C over night, secondary antibody (cat: NA) was diluted at 1:10000, 37°C 1hour.



Immunofluorescence analysis of HeLa cell. 1, c-Myc Polyclonal Antibody (red) was diluted at 1:200 (4°C overnight). CYCS monoclonal antibody (4B10) (green) was diluted at 1:200 (4°C overnight). 2, Goat Anti Rabbit Alexa Fluor 594 Catalog: (NA) was diluted at 1:1000 (room temperature, 50min). Goat Anti Mouse Alexa Fluor 488 Catalog: (NA) was diluted at 1:1000 (room temperature, 50min).

FOR RESEARCH USE ONLY. Not intended for diagnostic or therapeutic use.