

## Anti-Acetyl-KAT2B-Lys428 antibody (STJ97360)

### GENERAL INFORMATION

Product Type	Primary antibodies
Applications	WB/IHC
Host / Source	Rabbit
Reactivity	Human/Mouse

### PRODUCT PROPERTIES

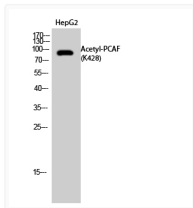
Clonality	Polyclonal
Concentration	1 mg/mL
Conjugation	Unconjugated
Purification	The antibody was affinity-purified from rabbit antiserum by affinity-chromatography using epitope-specific immunogen.
Dilution Range	WB 1:500-2000 IHC-P 1:50-300
Formulation	Liquid in PBS containing 50% Glycerol, 0.5% BSA and 0.02% Sodium Azide.
Isotype	IgG
Molecular Weight	Observed: 93kD
Storage Instruction	Store at -20°C for up to 1 year from the date of receipt, and avoid repeat freeze-thaw cycles.

### TARGET INFORMATION

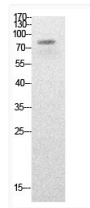
Gene ID	<a href="#">8850</a>
Gene Symbol	<a href="#">KAT2B</a>
UniProt ID	<a href="#">KAT2B_HUMAN</a>
Specificity	Acetyl-PCAF (K428) Polyclonal Antibody Synthesized peptide derived from the human PCAF around the acetylation site of K428.

### ADDITIONAL INFORMATION

Note **STRICTLY FOR FURTHER SCIENTIFIC RESEARCH USE ONLY (RUO). MUST NOT TO BE USED IN DIAGNOSTIC OR THERAPEUTIC APPLICATIONS.**



Western blot analysis of HepG2 cells using Acetyl-PCAF (K428) Polyclonal Antibody. Secondary antibody was diluted at 1:20000



Western blot analysis of HepG2 cells using Acetyl-PCAF (K428) Polyclonal Antibody. Secondary antibody was diluted at 1:20000