

Anti-GDF7 antibody (321-370 aa) (STJ97349)

GENERAL INFORMATION

Product Type	Primary antibodies
Applications	WB/IHC/IF/ELISA
Host / Source	Rabbit
Reactivity	Human/Mouse/Rat

PRODUCT PROPERTIES

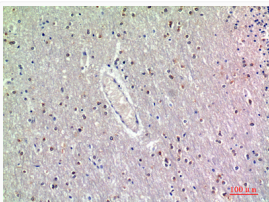
Clonality	Polyclonal
Concentration	1 mg/mL
Conjugation	Unconjugated
Purification	The antibody was affinity-purified from rabbit antiserum by affinity-chromatography using epitope-specific immunogen.
Dilution Range	WB 1:500-1:2000 IHC-P 1:100-1:300 ELISA 1:10000 IF 1:50-200
Formulation	Liquid in PBS containing 50% Glycerol, 0.5% BSA and 0.02% Sodium Azide.
Isotype	IgG
Molecular Weight	Observed: 47kD
Storage Instruction	Store at -20°C for up to 1 year from the date of receipt, and avoid repeat freeze-thaw cycles.

TARGET INFORMATION

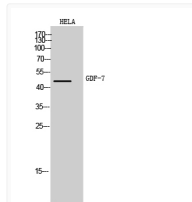
Gene ID	151449
Gene Symbol	GDF7
UniProt ID	GDF7_HUMAN
Immunogen Region	321-370 aa
Specificity	GDF-7 Polyclonal Antibody detects endogenous levels of GDF-7 protein.

ADDITIONAL INFORMATION

Note: STRICTLY FOR FURTHER SCIENTIFIC RESEARCH USE ONLY (RUO). MUST NOT TO BE USED IN DIAGNOSTIC OR THERAPEUTIC APPLICATIONS.



Immunohistochemical analysis of paraffin-embedded human-brain, antibody was diluted at 1:200



Western blot analysis of HeLa cells using GDF-7 Polyclonal Antibody. Antibody was diluted at 1:1000. Secondary antibody was diluted at 1:20000