

Anti-ENPEP antibody (671-720 aa) (STJ97334)

GENERAL INFORMATION

Product Type	Primary antibodies
Applications	WB/IHC/IF/ELISA
Host / Source	Rabbit
Reactivity	Human/Mouse/Rat

PRODUCT PROPERTIES

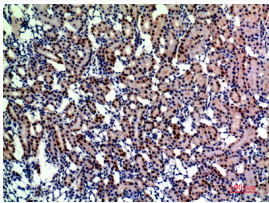
Clonality	Polyclonal
Concentration	1 mg/mL
Conjugation	Unconjugated
Purification	The antibody was affinity-purified from rabbit antiserum by affinity-chromatography using epitope-specific immunogen.
Dilution Range	WB 1:500-1:2000 IHC-P 1:100-1:300 ELISA 1:10000 IF 1:50-200
Formulation	Liquid in PBS containing 50% Glycerol, 0.5% BSA and 0.02% Sodium Azide.
Isotype	IgG
Molecular Weight	Observed: 110kD
Storage Instruction	Store at -20°C for up to 1 year from the date of receipt, and avoid repeat freeze-thaw cycles.

TARGET INFORMATION

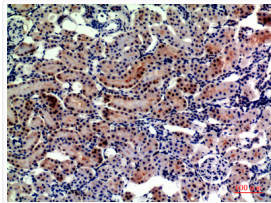
Gene ID	2028
Gene Symbol	ENPEP
UniProt ID	AMPE_HUMAN
Immunogen Region	671-720 aa
Specificity	CD249 Polyclonal Antibody detects endogenous levels of CD249 protein.

ADDITIONAL INFORMATION

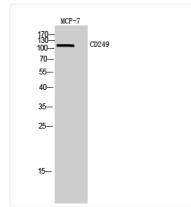
Note STRICTLY FOR FURTHER SCIENTIFIC RESEARCH USE ONLY (RUO). MUST NOT TO BE USED IN DIAGNOSTIC OR THERAPEUTIC APPLICATIONS.



Immunohistochemical analysis of paraffin-embedded rat-kidney, antibody was diluted at 1:200



Immunohistochemical analysis of paraffin-embedded rat-kidney, antibody was diluted at 1:200



Western blot analysis of MCF7 cells using CD249 Polyclonal Antibody. Secondary antibody was diluted at 1:20000