

Anti-GYPA antibody (41-90 aa) (STJ97333)

GENERAL INFORMATION

Product Type	Primary antibodies
Applications	WB/IHC/IF/ELISA
Host / Source	Rabbit
Reactivity	Human/Rat/Mouse

PRODUCT PROPERTIES

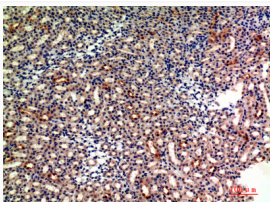
Clonality	Polyclonal
Concentration	1 mg/mL
Conjugation	Unconjugated
Purification	The antibody was affinity-purified from rabbit antiserum by affinity-chromatography using epitope-specific immunogen.
Dilution Range	WB 1:500-1:2000 IHC-P 1:100-1:300 ELISA 1:10000 IF 1:50-200
Formulation	Liquid in PBS containing 50% Glycerol, 0.5% BSA and 0.02% Sodium Azide.
Isotype	IgG
Molecular Weight	Observed: 16kD
Storage Instruction	Store at -20°C for up to 1 year from the date of receipt, and avoid repeat freeze-thaw cycles.

TARGET INFORMATION

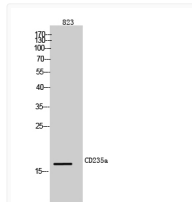
Gene ID	2993
Gene Symbol	GYPA
UniProt ID	GLPA_HUMAN
Immunogen Region	41-90 aa
Specificity	CD235a Polyclonal Antibody detects endogenous levels of CD235a protein.

ADDITIONAL INFORMATION

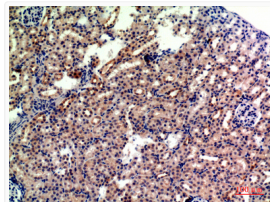
Note STRICTLY FOR FURTHER SCIENTIFIC RESEARCH USE ONLY (RUO). MUST NOT TO BE USED IN DIAGNOSTIC OR THERAPEUTIC APPLICATIONS.



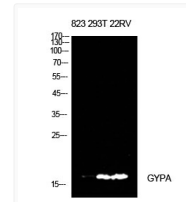
Immunohistochemical analysis of paraffin-embedded mouse-kidney, antibody was diluted at 1:200



Western blot analysis of 823 cells using CD235a Polyclonal Antibody diluted at 1: 500. Secondary antibody was diluted at 1:20000



Immunohistochemical analysis of paraffin-embedded mouse-kidney, antibody was diluted at 1:200



Western blot analysis of 823, 293T, 22RV cells using CD235a Polyclonal Antibody. Antibody was diluted at 1:500. Secondary antibody was diluted at 1:20000