

Anti-PLXNC1 antibody (811-860 aa) (STJ97322)

GENERAL INFORMATION

Product Type	Primary antibodies
Applications	WB/ELISA
Host / Source	Rabbit
Reactivity	Human/Mouse/Rat

PRODUCT PROPERTIES

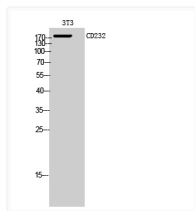
Clonality	Polyclonal
Concentration	1 mg/mL
Conjugation	Unconjugated
Purification	The antibody was affinity-purified from rabbit antiserum by affinity-chromatography using epitope-specific immunogen.
Dilution Range	WB 1:500-1:2000 ELISA 1:10000
Formulation	Liquid in PBS containing 50% Glycerol, 0.5% BSA and 0.02% Sodium Azide.
Isotype	IgG
Molecular Weight	Observed: 175kD
Storage Instruction	Store at -20°C for up to 1 year from the date of receipt, and avoid repeat freeze-thaw cycles.

TARGET INFORMATION

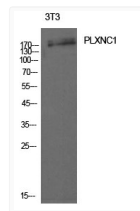
Gene ID	10154
Gene Symbol	PLXNC1
UniProt ID	PLXC1_HUMAN
Immunogen Region	811-860 aa
Specificity	CD232 Polyclonal Antibody detects endogenous levels of CD232 protein.

ADDITIONAL INFORMATION

Note **STRICTLY FOR FURTHER SCIENTIFIC RESEARCH USE ONLY (RUO). MUST NOT TO BE USED IN DIAGNOSTIC OR THERAPEUTIC APPLICATIONS.**



Western blot analysis of 3T3 cells using CD232 Polyclonal Antibody diluted at 1: 1000. Secondary antibody was diluted at 1:20000



Western blot analysis of 3T3 cells using CD232 Polyclonal Antibody. Antibody was diluted at 1:1000. Secondary antibody was diluted at 1:20000