

Anti-SIRP-Alpha 1/Beta 1 antibody (281-330 aa) (STJ97319)

GENERAL INFORMATION

Product Type	Primary antibodies
Applications	WB/IHC/IF/ELISA
Host / Source	Rabbit
Reactivity	Human/Rat/Mouse

PRODUCT PROPERTIES

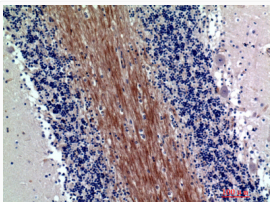
Clonality	Polyclonal
Concentration	1 mg/mL
Conjugation	Unconjugated
Purification	The antibody was affinity-purified from rabbit antiserum by affinity-chromatography using epitope-specific immunogen.
Dilution Range	WB 1:500-1:2000 IHC-P 1:100-1:300 ELISA 1:10000 IF 1:50-200
Formulation	Liquid in PBS containing 50% Glycerol, 0.5% BSA and 0.02% Sodium Azide.
Isotype	IgG
Molecular Weight	Observed: 55kD
Storage Instruction	Store at -20°C for up to 1 year from the date of receipt, and avoid repeat freeze-thaw cycles.

TARGET INFORMATION

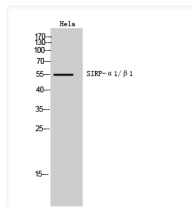
Gene ID	140885 10326
Gene Symbol	SIRPA SIRPB1
UniProt ID	SHPS1_HUMAN SIRBL_HUMAN
Immunogen Region	281-330 aa
Specificity	SIRP-Alpha 1/Beta 1 Polyclonal Antibody detects endogenous levels of SIRP-Alpha 1/Beta 1 protein.

ADDITIONAL INFORMATION

Note **STRICTLY FOR FURTHER SCIENTIFIC RESEARCH USE ONLY (RUO). MUST NOT TO BE USED IN DIAGNOSTIC OR THERAPEUTIC APPLICATIONS.**



Immunohistochemical analysis of paraffin-embedded human-brain, antibody was diluted at 1:200



Western blot analysis of HeLa cells using SIRP-Alpha 1/Beta 1 Polyclonal Antibody.. Secondary antibody was diluted at 1:20000