

Anti-CD300C antibody (131-180 aa) (STJ97314)

GENERAL INFORMATION

Product Type	Primary antibodies
Applications	WB/ELISA
Host / Source	Rabbit
Reactivity	Human/Rat/Mouse

PRODUCT PROPERTIES

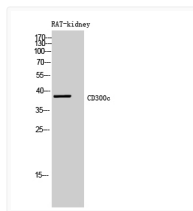
Clonality	Polyclonal
Concentration	1 mg/mL
Conjugation	Unconjugated
Purification	The antibody was affinity-purified from rabbit antiserum by affinity-chromatography using epitope-specific immunogen.
Dilution Range	WB 1:500-1:2000 ELISA 1:10000
Formulation	Liquid in PBS containing 50% Glycerol, 0.5% BSA and 0.02% Sodium Azide.
Isotype	IgG
Molecular Weight	Observed: 37kD
Storage Instruction	Store at -20°C for up to 1 year from the date of receipt, and avoid repeat freeze-thaw cycles.

TARGET INFORMATION

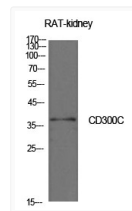
Gene ID	10871
Gene Symbol	CD300C
UniProt ID	CLM6_HUMAN
Immunogen Region	131-180 aa
Specificity	CD300c Polyclonal Antibody detects endogenous levels of CD300c protein.

ADDITIONAL INFORMATION

Note **STRICTLY FOR FURTHER SCIENTIFIC RESEARCH USE ONLY (RUO). MUST NOT TO BE USED IN DIAGNOSTIC OR THERAPEUTIC APPLICATIONS.**



Western blot analysis of RAT-kidney cells using CD300c Polyclonal Antibody diluted at 1:500. Secondary antibody was diluted at 1:20000



Western blot analysis of rat kidney cells using CD300c Polyclonal Antibody. Antibody was diluted at 1:500. Secondary antibody was diluted at 1:20000