

Anti-KIR2DL1 antibody (131-180 aa) (STJ97313)

GENERAL INFORMATION

Product Type	Primary antibodies
Applications	WB/ELISA
Host / Source	Rabbit
Reactivity	Human/Rat/Mouse

PRODUCT PROPERTIES

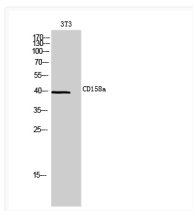
Clonality	Polyclonal
Concentration	1 mg/mL
Conjugation	Unconjugated
Purification	The antibody was affinity-purified from rabbit antiserum by affinity-chromatography using epitope-specific immunogen.
Dilution Range	WB 1:500-1:2000 ELISA 1:10000
Formulation	Liquid in PBS containing 50% Glycerol, 0.5% BSA and 0.02% Sodium Azide.
Isotype	IgG
Molecular Weight	Observed: 39kD
Storage Instruction	Store at -20°C for up to 1 year from the date of receipt, and avoid repeat freeze-thaw cycles.

TARGET INFORMATION

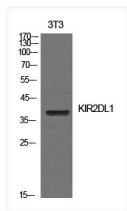
Gene ID	3802
Gene Symbol	KIR2DL1
UniProt ID	K12L1_HUMAN
Immunogen Region	131-180 aa
Specificity	CD158a Polyclonal Antibody detects endogenous levels of CD158a protein.

ADDITIONAL INFORMATION

Note **STRICTLY FOR FURTHER SCIENTIFIC RESEARCH USE ONLY (RUO). MUST NOT TO BE USED IN DIAGNOSTIC OR THERAPEUTIC APPLICATIONS.**



Western blot analysis of 3T3 cells using CD158a Polyclonal Antibody. Secondary antibody was diluted at 1:20000



Western blot analysis of NIH-3T3 cells using KIR2DL1 Polyclonal Antibody. Secondary antibody was diluted at 1:20000