

Anti-CD36 antibody (331-380 aa) (STJ97280)

GENERAL INFORMATION

Product Type	Primary antibodies
Applications	WB/IHC/ELISA
Host / Source	Rabbit
Reactivity	Human/Mouse/Rat/Tilapia

PRODUCT PROPERTIES

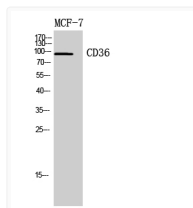
Clonality	Polyclonal
Concentration	1 mg/mL
Conjugation	Unconjugated
Purification	The antibody was affinity-purified from rabbit antiserum by affinity-chromatography using epitope-specific immunogen.
Dilution Range	WB 1:500-1:2000 IHC 1:100-1:300 ELISA 1:10000
Formulation	Liquid in PBS containing 50% Glycerol, 0.5% BSA and 0.02% Sodium Azide.
Isotype	IgG
Molecular Weight	Observed: 90kD
Storage Instruction	Store at -20°C for up to 1 year from the date of receipt, and avoid repeat freeze-thaw cycles.

TARGET INFORMATION

Gene ID	948
Gene Symbol	CD36
UniProt ID	CD36_HUMAN
Immunogen Region	331-380 aa
Specificity	CD36 Polyclonal Antibody detects endogenous levels of CD36 protein.

ADDITIONAL INFORMATION

Note STRICTLY FOR FURTHER SCIENTIFIC RESEARCH USE ONLY (RUO). MUST NOT TO BE USED IN DIAGNOSTIC OR THERAPEUTIC APPLICATIONS.



Western blot analysis of MCF7, 4T1 cells using CD36 Polyclonal Antibody.. Secondary antibody was diluted at 1:20000