

Anti-CHRNA1 antibody (171-220 aa) (STJ97250)

GENERAL INFORMATION

Product Type	Primary antibodies
Applications	WB/IF/ELISA
Host / Source	Rabbit
Reactivity	Human/Mouse/Rat

PRODUCT PROPERTIES

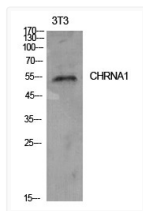
Clonality	Polyclonal
Concentration	1 mg/mL
Conjugation	Unconjugated
Purification	The antibody was affinity-purified from rabbit antiserum by affinity-chromatography using epitope-specific immunogen.
Dilution Range	WB 1:500-1:2000 ELISA 1:5000 IF 1:100-300
Formulation	Liquid in PBS containing 50% Glycerol, 0.5% BSA and 0.02% Sodium Azide.
Isotype	IgG
Molecular Weight	Observed: 55kD
Storage Instruction	Store at -20°C for up to 1 year from the date of receipt, and avoid repeat freeze-thaw cycles.

TARGET INFORMATION

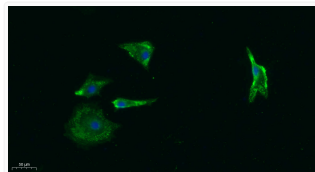
Gene ID	1134
Gene Symbol	CHRNA1
UniProt ID	ACHA_HUMAN
Immunogen Region	171-220 aa
Specificity	AChR Alpha 1 Polyclonal Antibody detects endogenous levels of AChR Alpha 1 protein.

ADDITIONAL INFORMATION

Note STRICTLY FOR FURTHER SCIENTIFIC RESEARCH USE ONLY (RUO). MUST NOT TO BE USED IN DIAGNOSTIC OR THERAPEUTIC APPLICATIONS.



Western Blot analysis of NIH-3T3 cells using AChRα1 Polyclonal Antibody. Secondary antibody was STJ97250



Immunofluorescence analysis of A549. 1, primary antibody was diluted at 1:200 (4°C overnight). 2, Goat Anti Rabbit IgG STJ97250