

## Anti-RELA antibody (200-300 aa) [5G6] (STJ97013)

### GENERAL INFORMATION

|               |                    |
|---------------|--------------------|
| Product Type  | Primary antibodies |
| Applications  | WB/IHC/IF/IP       |
| Host / Source | Mouse              |
| Reactivity    | Human/Mouse/Rat    |

### PRODUCT PROPERTIES

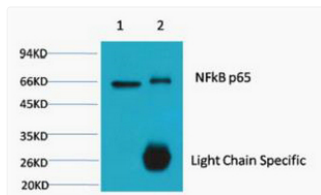
|                     |  |
|---------------------|--|
| Clonality           | Monoclonal   |
| Conjugation         | Unconjugated   |
| Purification        | The antibody was affinity-purified from mouse ascites by affinity-chromatography using specific immunogen. |
| Dilution Range      | WB 1:1000-3000<br>IP 1:200<br>IF 1:200<br>IHC 1:50-300   |
| Formulation         | Liquid in PBS pH7.4, 0.5% BSA, 0.02% Sodium Azide and 50% Glycerol.  |
| Isotype             | IgG1   |
| Molecular Weight    | Calculated: 65kD<br>Observed: 70kD   |
| Storage Instruction | Store at -20°C for up to 1 year from the date of receipt, and avoid repeat freeze-thaw cycles.             |

### TARGET INFORMATION

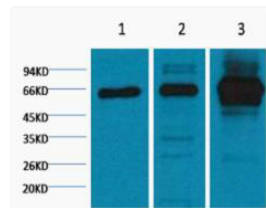
|                  |   |
|------------------|---|
| Gene ID          | <a href="#">5970</a>                          |
| Gene Symbol      | <a href="#">RELA</a>                          |
| UniProt ID       | <a href="#">TF65_HUMAN</a>                    |
| Immunogen Region | 200-300 aa                                    |
| Specificity      | The antibody detects endogenous p65 proteins. |

### ADDITIONAL INFORMATION

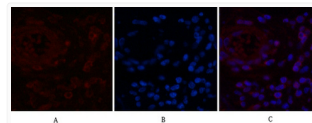
Note STRICTLY FOR FURTHER SCIENTIFIC RESEARCH USE ONLY (RUO). MUST NOT TO BE USED IN DIAGNOSTIC OR THERAPEUTIC APPLICATIONS.



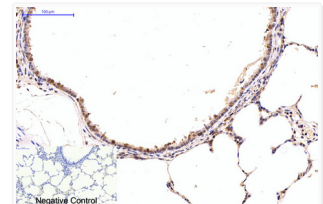
1) Input: HeLa Cell Lysate , 2) IP product: IP dilute 1:200



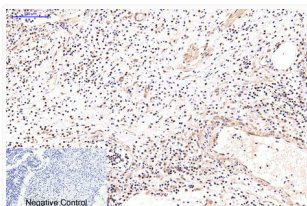
Western blot analysis of 1) HeLa, 2) Rat Heart Tissue, 3) Mouse Spleen Tissue, diluted at 1:2000.



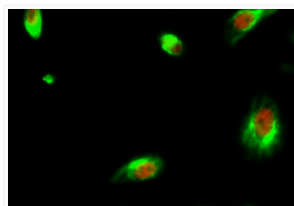
Immunofluorescence analysis of Human-appendix tissue. 1, NFkB p65 monoclonal antibody (5G6) (red) was diluted at 1:200 (4°C, overnight). 2, Cy3 labeled Secondary antibody was diluted at 1:300 (room temperature, 50min). 3, Picture B: DAPI (blue) 10min. Picture A:Target. Picture B: DAPI. Picture C: merge of A+B



Immunohistochemical analysis of paraffin-embedded Rat-lung tissue. 1, NFkB p65 monoclonal antibody (5G6) was diluted at 1:200 (4°C, overnight). 2, Sodium citrate pH 6.0 was used for antibody retrieval (>98°C, 20min). 3, Secondary antibody was diluted at 1:200 (room temperature, 30min). Negative control was used by secondary antibody only.



Immunohistochemical analysis of paraffin-embedded Human-Appendix tissue. 1, NFkB p65 monoclonal antibody (5G6) was diluted at 1:200 (4°C, overnight). 2, Sodium citrate pH 6.0 was used for antibody retrieval (>98°C, 20min). 3, Secondary antibody was diluted at 1:200 (room temperature, 30min). Negative control was used by secondary antibody only.



Immunofluorescence analysis of HeLa cell. 1, BMP-2 Polyclonal Antibody (green) was diluted at 1:200 (4°C overnight). (red) was diluted at 1:200 (4°C overnight). 2, Goat Anti Rabbit Alexa Fluor 488 Catalog: (NA was diluted at 1:1000 (room temperature, 50min). Goat Anti Mouse Alexa Fluor 594 Catalog: (NA was diluted at 1:1000 (room temperature, 50min).