

## Anti-Tri-Methyl-Histone H3-Lys79 antibody [3G3] (STJ96993)

### GENERAL INFORMATION

Product Type	Primary antibodies
Applications	WB/IHC/IF/IP
Host / Source	Mouse
Reactivity	Human/Mouse/Rat

### PRODUCT PROPERTIES

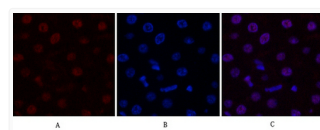
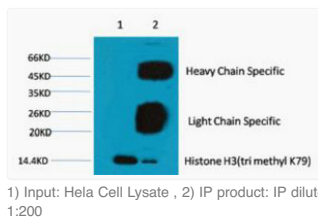
Clonality	Monoclonal
Conjugation	Unconjugated
Purification	The antibody was affinity-purified from mouse ascites by affinity-chromatography using specific immunogen.
Dilution Range	WB 1:500-2000 IP 1:200 IF 1:200 IHC 1:50-300
Formulation	Liquid in PBS pH7.4, 0.5% BSA, 0.02% Sodium Azide and 50% Glycerol.
Isotype	IgG1
Molecular Weight	Observed: 15kD
Storage Instruction	Store at -20°C for up to 1 year from the date of receipt, and avoid repeat freeze-thaw cycles.

### TARGET INFORMATION

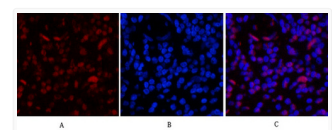
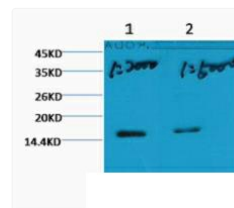
Gene ID	<a href="#">126961/333932/653604/8350/8351/8352/8353/8354/8355/</a>
Gene Symbol	<a href="#">H3C15.H3C14.H3C13</a>
UniProt ID	<a href="#">H32_HUMAN</a> <a href="#">H31_HUMAN</a> <a href="#">H33_HUMAN</a> <
Specificity	The antibody detects endogenous Histone H3 (tri methyl K79) protein.

### ADDITIONAL INFORMATION

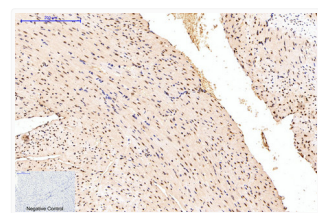
Note STRICTLY FOR FURTHER SCIENTIFIC RESEARCH USE ONLY (RUO). MUST NOT TO BE USED IN DIAGNOSTIC OR THERAPEUTIC APPLICATIONS.



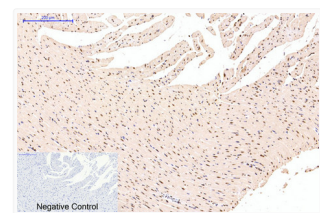
Immunofluorescence analysis of Rat-liver tissue. 1, Histone H3 (Tri Methyl Lys79) monoclonal antibody (3G3) (red) was diluted at 1:200 (4°C, overnight), 2, Cy3 labeled Secondary antibody was diluted at 1:300 (room temperature, 50min).3, Picture B: DAPI (blue) 10min. Picture A:Target. Picture B: DAPI. Picture C: merge of A+B



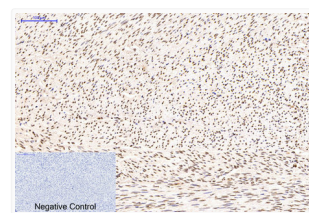
Immunofluorescence analysis of Human-appendix tissue. 1, Histone H3 (Tri Methyl Lys79) monoclonal antibody (3G3) (red) was diluted at 1:200 (4°C, overnight), 2, Cy3 labeled Secondary antibody was diluted at 1:300 (room temperature, 50min).3, Picture B: DAPI (blue) 10min. Picture A:Target. Picture B: DAPI. Picture C: merge of A+B



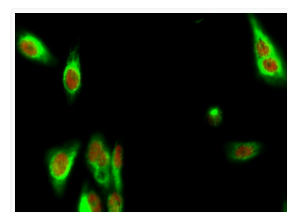
Immunohistochemical analysis of paraffin-embedded Mouse-heart tissue. 1, Histone H3 (Tri Methyl Lys79) monoclonal antibody (3G3) was diluted at 1:200 (4°C, overnight), 2, Sodium citrate pH 6.0 was used for antibody retrieval (>98°C, 20min), 3, Secondary antibody was diluted at 1:200 (room temperature, 30min). Negative control was used by secondary antibody only.



Immunohistochemical analysis of paraffin-embedded Rat-heart tissue. 1, Histone H3 (Tri Methyl Lys79) monoclonal antibody (3G3) was diluted at 1:200 (4°C, overnight), 2, Sodium citrate pH 6.0 was used for antibody retrieval (>98°C, 20min), 3, Secondary antibody was diluted at 1:200 (room temperature, 30min). Negative control was used by secondary antibody only.



Immunohistochemical analysis of paraffin-embedded Human-uterus tissue. 1, Histone H3 (Tri Methyl Lys79) monoclonal antibody (3G3) was diluted at 1:200 (4°C, overnight), 2, Sodium citrate pH 6.0 was used for antibody retrieval (>98°C, 20min), 3, Secondary antibody was diluted at 1:200 (room temperature, 30min). Negative control was used by secondary antibody only.



Immunofluorescence analysis of HeLa cell. 1, Bek Polyclonal Antibody (green) was diluted at 1:200 (4°C overnight), (red) was diluted at 1:200 (4°C overnight), 2, Goat Anti Rabbit Alexa Fluor 488 Catalog: (NA was diluted at 1:1000 (room temperature, 50min). Goat Anti Mouse Alexa Fluor 594 Catalog: (NA was diluted at 1:1000 (room temperature, 50min).