

## Anti-ABCB5 antibody [11A2] (STJ96976)

### GENERAL INFORMATION

|               |                    |
|---------------|--------------------|
| Product Type  | Primary antibodies |
| Applications  | WB/IHC/IF          |
| Host / Source | Mouse              |
| Reactivity    | Human              |

### PRODUCT PROPERTIES

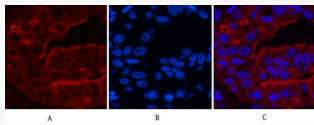
|                     |  |
|---------------------|--|
| Clonality           | Monoclonal   |
| Conjugation         | Unconjugated   |
| Purification        | The antibody was affinity-purified from mouse ascites by affinity-chromatography using specific immunogen. |
| Dilution Range      | WB 1:2000<br>IF 1:200<br>IHC 1:50-300  |
| Formulation         | Liquid in PBS pH7.4, 0.5% BSA, 0.02% Sodium Azide and 50% Glycerol.  |
| Isotype             | IgG1   |
| Molecular Weight    | Observed: 90kD   |
| Storage Instruction | Store at -20°C for up to 1 year from the date of receipt, and avoid repeat freeze-thaw cycles.             |

### TARGET INFORMATION

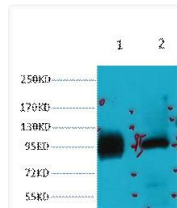
|             |   |
|-------------|---|
| Gene ID     | <a href="#">340273</a>                          |
| Gene Symbol | <a href="#">ABCB5</a>                           |
| UniProt ID  | <a href="#">ABCB5_HUMAN</a>                     |
| Specificity | The antibody detects endogenous ABCB5 proteins. |

### ADDITIONAL INFORMATION

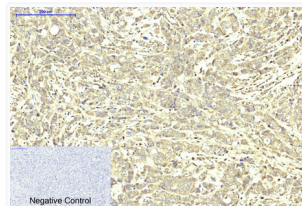
Note **STRICTLY FOR FURTHER SCIENTIFIC RESEARCH USE ONLY (RUO). MUST NOT TO BE USED IN DIAGNOSTIC OR THERAPEUTIC APPLICATIONS.**



Immunofluorescence analysis of Human-liver-cancer tissue. 1, ABCB5 monoclonal antibody (11A2) (red) was diluted at 1:200 (4°C, overnight). 2, Cy3 labeled Secondary antibody was diluted at 1:300 (room temperature, 50min). 3, Picture B: DAPI (blue) 10min. Picture A: Target. Picture B: DAPI. Picture C: merge of A+B



Western blot analysis of 1) HeLa, 2) 293T, diluted at 1:2000. cells nucleus extracted by Minute™ Cytoplasmic and Nuclear Fractionation kit (SC-003, Inventibiotech, MN, USA).



Immunohistochemical analysis of paraffin-embedded Human-breast-cancer tissue. 1, ABCB5 monoclonal antibody (11A2) was diluted at 1:200 (4°C, overnight). 2, Sodium citrate pH 6.0 was used for antibody retrieval (>98°C, 20min). 3, Secondary antibody was diluted at 1:200 (room temperature, 30min). Negative control was used by secondary antibody only.