

## Anti-KIF7 antibody [3F8] (STJ96965)

### GENERAL INFORMATION

Product Type	Primary antibodies
Applications	IHC/IF
Host / Source	Mouse
Reactivity	Human/Mouse/Rat

### PRODUCT PROPERTIES

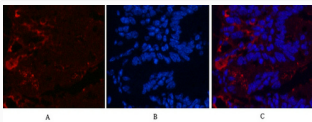
Clonality	Monoclonal
Conjugation	Unconjugated
Purification	The antibody was affinity-purified from mouse ascites by affinity-chromatography using specific immunogen.
Dilution Range	WB 500-2000 1:200 IF 1:50-200
Formulation	Liquid in PBS pH7.4, 0.5% BSA, 0.02% Sodium Azide and 50% Glycerol.
Isotype	IgG1
Storage Instruction	Store at -20°C for up to 1 year from the date of receipt, and avoid repeat freeze-thaw cycles.

### TARGET INFORMATION

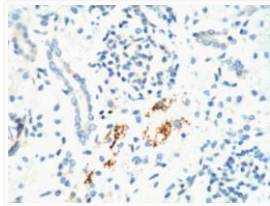
Gene ID	<a href="#">374654</a>
Gene Symbol	<a href="#">KIF7</a>
UniProt ID	<a href="#">KIF7_HUMAN</a>
Specificity	The antibody detects endogenous Kif 7 proteins.

### ADDITIONAL INFORMATION

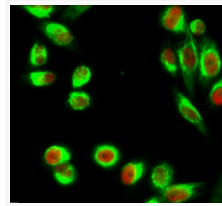
Note **STRICTLY FOR FURTHER SCIENTIFIC RESEARCH USE ONLY (RUO). MUST NOT TO BE USED IN DIAGNOSTIC OR THERAPEUTIC APPLICATIONS.**



Immunofluorescence analysis of Mouse-colon tissue. 1, Kif 7 monoclonal antibody (3F8) (red) was diluted at 1:200 (4°C, overnight). 2, Cy3 labeled Secondary antibody was diluted at 1:300 (room temperature, 50min). 3, Picture B: DAPI (blue) 10min. Picture A: Target. Picture B: DAPI. Picture C: merge of A+B



IHC staining of Mouse Kidney tissue, diluted at 1:200.



Immunofluorescence analysis of Hela cell. 1, C/EBP Beta Polyclonal Antibody (red) was diluted at 1:200 (4°C overnight). 2, Kif 7 monoclonal antibody (3F8) (green) was diluted at 1:200 (4°C overnight). 3, Goat Anti Rabbit Alexa Fluor 594 Catalog: (NA was diluted at 1:1000 (room temperature, 50min). Goat Anti Mouse Alexa Fluor 488 Catalog: (NA was diluted at 1:1000 (room temperature, 50min).