

Anti-IL18R1 antibody (231-280 aa) (STJ96837)

GENERAL INFORMATION

Product Type	Primary antibodies
Applications	WB/ELISA
Host / Source	Rabbit
Reactivity	Human/Rat/Mouse

PRODUCT PROPERTIES

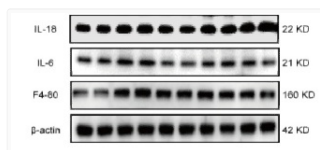
Clonality	Polyclonal
Concentration	1 mg/mL
Conjugation	Unconjugated
Purification	The antibody was affinity-purified from rabbit antiserum by affinity-chromatography using epitope-specific immunogen.
Dilution Range	WB 1:500-1:2000 ELISA 1:20000
Formulation	Liquid in PBS containing 50% Glycerol, 0.5% BSA and 0.02% Sodium Azide.
Isotype	IgG
Molecular Weight	Observed: 63kD
Storage Instruction	Store at -20°C for up to 1 year from the date of receipt, and avoid repeat freeze-thaw cycles.

TARGET INFORMATION

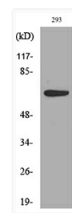
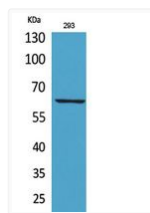
Gene ID	8809
Gene Symbol	IL18R1
UniProt ID	IL18R_HUMAN
Immunogen Region	231-280 aa
Specificity	IL-18R Polyclonal Antibody detects endogenous levels of IL-18R protein.

ADDITIONAL INFORMATION

Note **STRICTLY FOR FURTHER SCIENTIFIC RESEARCH USE ONLY (RUO). MUST NOT TO BE USED IN DIAGNOSTIC OR THERAPEUTIC APPLICATIONS.**



Identification of CCR2 as a hub in septic myocardial injury and cardioprotection of silibinin in FREE RADICAL BIOLOGY STJ96837



Western Blot analysis of 293 cells using IL-18R Polyclonal Antibody. Secondary antibody was diluted STJ96837. Western blot analysis of lysate from 293 cells, using IL18R1 Antibody. STJ96837