

Anti-CD158b2/j antibody (131-180 aa) (STJ96772)

GENERAL INFORMATION

Product Type	Primary antibodies
Applications	WB/ELISA
Host / Source	Rabbit
Reactivity	Human/Rat/Mouse

PRODUCT PROPERTIES

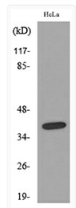
Clonality	Polyclonal
Concentration	1 mg/mL
Conjugation	Unconjugated
Purification	The antibody was affinity-purified from rabbit antiserum by affinity-chromatography using epitope-specific immunogen.
Dilution Range	WB 1:500-1:2000 ELISA 1:20000
Formulation	Liquid in PBS containing 50% Glycerol, 0.5% BSA and 0.02% Sodium Azide.
Isotype	IgG
Molecular Weight	Observed: 38kD
Storage Instruction	Store at -20°C for up to 1 year from the date of receipt, and avoid repeat freeze-thaw cycles.

TARGET INFORMATION

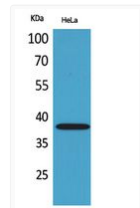
Gene ID	100132285 3804
Gene Symbol	KIR2DS2 KIR2DL3
UniProt ID	K12S2_HUMAN K12L3_HUMAN
Immunogen Region	131-180 aa
Specificity	CD158b2/j Polyclonal Antibody detects endogenous levels of CD158b2/j protein.

ADDITIONAL INFORMATION

Note STRICTLY FOR FURTHER SCIENTIFIC RESEARCH USE ONLY (RUO). MUST NOT TO BE USED IN DIAGNOSTIC OR THERAPEUTIC APPLICATIONS.



Western blot analysis of lysate from HeLa cells, using KIR2DL3/KIR2DS2 Antibody.



Western blot analysis of HeLa cells using CD158b2/j Polyclonal Antibody.. Secondary antibody was diluted at 1:20000