

Anti-TNFSF11 antibody (268-317 aa) (STJ96769)

GENERAL INFORMATION

| | |
|---------------|--------------------|
| Product Type | Primary antibodies |
| Applications | WB/IHC/IF/ELISA |
| Host / Source | Rabbit |
| Reactivity | Human/Mouse/Rat |

PRODUCT PROPERTIES

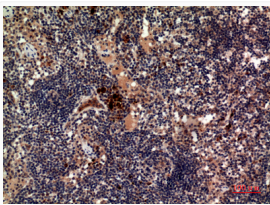
| | |
|---------------------|---|
| Clonality | Polyclonal |
| Concentration | 1 mg/mL |
| Conjugation | Unconjugated |
| Purification | The antibody was affinity-purified from rabbit antiserum by affinity-chromatography using epitope-specific immunogen. |
| Dilution Range | WB 1:500-1:2000 IHC-P 1:100-300 ELISA 1:20000 IF 1:100-300 |
| Formulation | Liquid in PBS containing 50% Glycerol, 0.5% BSA and 0.02% Sodium Azide. |
| Isotype | IgG |
| Molecular Weight | Observed: 35kD |
| Storage Instruction | Store at -20°C for up to 1 year from the date of receipt, and avoid repeat freeze-thaw cycles. |

TARGET INFORMATION

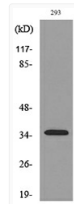
| | |
|------------------|---|
| Gene ID | 8600 |
| Gene Symbol | TNFSF11 |
| UniProt ID | TNF11_HUMAN |
| Immunogen Region | 268-317 aa |
| Specificity | RANKL Polyclonal Antibody detects endogenous levels of RANKL protein. |

ADDITIONAL INFORMATION

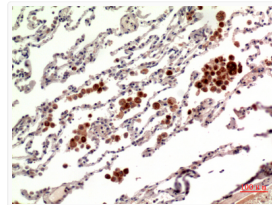
Note STRICTLY FOR FURTHER SCIENTIFIC RESEARCH USE ONLY (RUO). MUST NOT TO BE USED IN DIAGNOSTIC OR THERAPEUTIC APPLICATIONS.



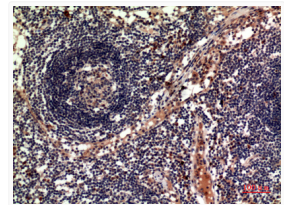
Immunohistochemical analysis of paraffin-embedded human-Lymph-nodes, antibody was diluted at 1:100



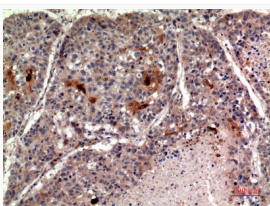
Western blot analysis of lysate from 293 cells, using TNFSF11 Antibody.



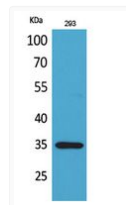
Immunohistochemical analysis of paraffin-embedded human-lung, antibody was diluted at 1:100



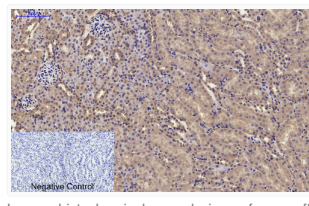
Immunohistochemical analysis of paraffin-embedded human-Lymph-nodes, antibody was diluted at 1:100



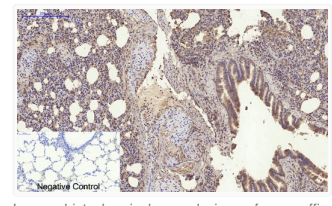
Immunohistochemical analysis of paraffin-embedded human-lung, antibody was diluted at 1:100



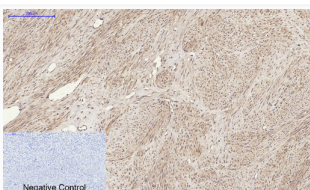
Western blot analysis of 293 cells using RANKL Polyclonal Antibody. Secondary antibody was diluted at 1:20000



Immunohistochemical analysis of paraffin-embedded Mouse-kidney tissue. 1, RANKL Polyclonal Antibody was diluted at 1:200 (4°C, overnight). 2, Sodium citrate pH 6.0 was used for antibody retrieval (>98°C, 20min). 3, Secondary antibody was diluted at 1:200 (room temperature, 30min). Negative control was used by secondary antibody only.



Immunohistochemical analysis of paraffin-embedded Rat-lung tissue. 1, RANKL Polyclonal Antibody was diluted at 1:200 (4°C, overnight). 2, Sodium citrate pH 6.0 was used for antibody retrieval (>98°C, 20min). 3, Secondary antibody was diluted at 1:200 (room temperature, 30min). Negative control was used by secondary antibody only.



Immunohistochemical analysis of paraffin-embedded Human-uterus tissue. 1, RANKL Polyclonal Antibody was diluted at 1:200 (4°C, overnight). 2, Sodium citrate pH 6.0 was used for antibody retrieval (>98°C, 20min). 3, Secondary antibody was diluted at 1:200 (room temperature, 30min). Negative control was used by secondary antibody only.

FOR RESEARCH USE ONLY. Not intended for diagnostic or therapeutic use.

FOR RESEARCH USE ONLY. Not intended for diagnostic or therapeutic use.

St Johns Laboratory Ltd, Knowledge Dock Business Centre, University Way, London, E16 2RD | Tel: 0208 223 3081