

Anti-ANGPTL1 antibody (11-60 aa) (STJ96729)

GENERAL INFORMATION

Product Type	Primary antibodies
Applications	WB/IHC/IF/ELISA
Host / Source	Rabbit
Reactivity	Human/Mouse/Rat

PRODUCT PROPERTIES

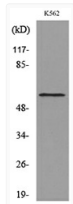
Clonality	Polyclonal
Concentration	1 mg/mL
Conjugation	Unconjugated
Purification	The antibody was affinity-purified from rabbit antiserum by affinity-chromatography using epitope-specific immunogen.
Dilution Range	WB 1:500-1:2000 IHC-P 1:100-1:300 ELISA 1:20000 IF 1:50-200
Formulation	Liquid in PBS containing 50% Glycerol, 0.5% BSA and 0.02% Sodium Azide.
Isotype	IgG
Molecular Weight	Observed: 57kD
Storage Instruction	Store at -20°C for up to 1 year from the date of receipt, and avoid repeat freeze-thaw cycles.

TARGET INFORMATION

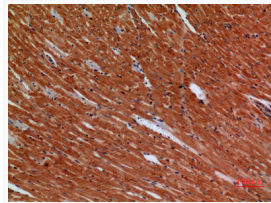
Gene ID	9068
Gene Symbol	ANGPTL1
UniProt ID	ANGL1_HUMAN
Immunogen Region	11-60 aa
Specificity	Angptl1 Polyclonal Antibody detects endogenous levels of Angptl1 protein.

ADDITIONAL INFORMATION

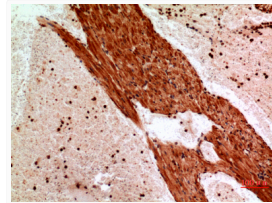
Note STRICTLY FOR FURTHER SCIENTIFIC RESEARCH USE ONLY (RUO). MUST NOT TO BE USED IN DIAGNOSTIC OR THERAPEUTIC APPLICATIONS.



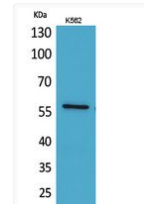
Western blot analysis of lysate from K562 cells, using ANGPTL1 Antibody.



Immunohistochemical analysis of paraffin-embedded mouse-heart, antibody was diluted at 1:100



Immunohistochemical analysis of paraffin-embedded mouse-heart, antibody was diluted at 1:100



Western blot analysis of K562 cells using Angptl1 Polyclonal Antibody. Secondary antibody was diluted at 1:20000