

Anti-KRT19 antibody (321-370 aa) (STJ96714)

GENERAL INFORMATION

Product Type	Primary antibodies
Applications	WB/IHC/IF/ELISA
Host / Source	Rabbit
Reactivity	Human/Rat/Mouse

PRODUCT PROPERTIES

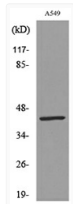
Clonality	Polyclonal
Concentration	1 mg/mL
Conjugation	Unconjugated
Purification	The antibody was affinity-purified from rabbit antiserum by affinity-chromatography using epitope-specific immunogen.
Dilution Range	WB 1:500-1:2000 IHC-P 1:100-1:300 ELISA 1:20000 IF 1:50-200
Formulation	Liquid in PBS containing 50% Glycerol, 0.5% BSA and 0.02% Sodium Azide.
Isotype	IgG
Molecular Weight	Observed: 44kD
Storage Instruction	Store at -20°C for up to 1 year from the date of receipt, and avoid repeat freeze-thaw cycles.

TARGET INFORMATION

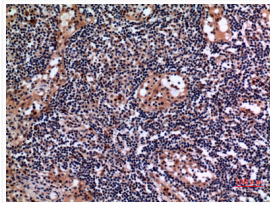
Gene ID	3880
Gene Symbol	KRT19
UniProt ID	K1C19_HUMAN
Immunogen Region	321-370 aa
Specificity	Cytokeratin 19 Polyclonal Antibody detects endogenous levels of Cytokeratin 19 protein.

ADDITIONAL INFORMATION

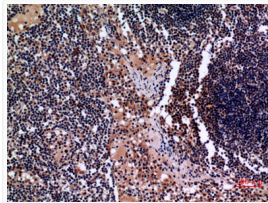
Note STRICTLY FOR FURTHER SCIENTIFIC RESEARCH USE ONLY (RUO). MUST NOT TO BE USED IN DIAGNOSTIC OR THERAPEUTIC APPLICATIONS.



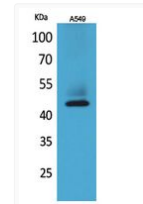
Western blot analysis of lysate from A549 cells, using KRT19 Antibody.



Immunohistochemical analysis of paraffin-embedded human-lymph-gland, antibody was diluted at 1:100



Immunohistochemical analysis of paraffin-embedded human-lymph-gland, antibody was diluted at 1:100



Western blot analysis of A549 cells using Cytokeratin 19 Polyclonal Antibody.. Secondary antibody was diluted at 1:20000