

## Anti-RFC1 antibody (Internal) (STJ96679)

### GENERAL INFORMATION

Product Type	Primary antibodies
Applications	WB/ELISA/IHC
Host / Source	Rabbit
Reactivity	Human/Mouse/Rat

### PRODUCT PROPERTIES

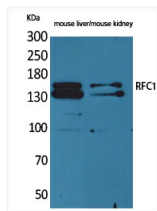
Clonality	Polyclonal
Concentration	1 mg/mL
Conjugation	Unconjugated
Purification	The antibody was affinity-purified from rabbit antiserum by affinity-chromatography using epitope-specific immunogen.
Dilution Range	WB 1:500-2000 IHC-P 1:50-300 ELISA 2000-20000
Formulation	Liquid in PBS containing 50% Glycerol, 0.5% BSA and 0.02% Sodium Azide.
Isotype	IgG
Molecular Weight	Observed: 128kD
Storage Instruction	Store at -20°C for up to 1 year from the date of receipt, and avoid repeat freeze-thaw cycles.

### TARGET INFORMATION

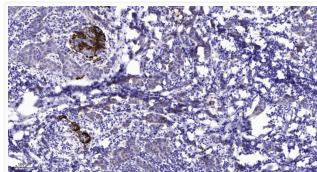
Gene ID	<a href="#">5981</a>
Gene Symbol	<a href="#">RFC1</a>
UniProt ID	<a href="#">RFC1_HUMAN</a>
Immunogen Region	Internal
Specificity	RFC1 Polyclonal Antibody detects endogenous levels of RFC1 protein.

### ADDITIONAL INFORMATION

Note STRICTLY FOR FURTHER SCIENTIFIC RESEARCH USE ONLY (RUO). MUST NOT TO BE USED IN DIAGNOSTIC OR THERAPEUTIC APPLICATIONS.



Western blot analysis of mouse liver and mouse kidney cells using RFC1 polyclonal antibody. Secondary antibody STJ96679



Immunohistochemical analysis of paraffin-embedded human breast cancer. 1. Antibody was diluted at 1:200 (4° overnight). STJ96679