

Anti-IFNL2 antibody (131-180 aa) (STJ96670)

GENERAL INFORMATION

Product Type	Primary antibodies
Applications	WB/IHC/IF/ELISA
Host / Source	Rabbit
Reactivity	Human/Rat/Mouse

PRODUCT PROPERTIES

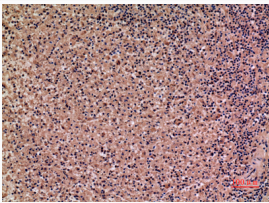
Clonality	Polyclonal
Concentration	1 mg/mL
Conjugation	Unconjugated
Purification	The antibody was affinity-purified from rabbit antiserum by affinity-chromatography using epitope-specific immunogen.
Dilution Range	WB 1:500-1:2000 IHC-P 1:100-1:300 ELISA 1:20000 IF 1:50-200
Formulation	Liquid in PBS containing 50% Glycerol, 0.5% BSA and 0.02% Sodium Azide.
Isotype	IgG
Molecular Weight	Observed: 25kD
Storage Instruction	Store at -20°C for up to 1 year from the date of receipt, and avoid repeat freeze-thaw cycles.

TARGET INFORMATION

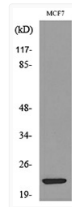
Gene ID	282616
Gene Symbol	IFNL2
UniProt ID	IFNL2_HUMAN
Immunogen Region	131-180 aa
Specificity	IL-28 Polyclonal Antibody detects endogenous levels of IL-28 protein.

ADDITIONAL INFORMATION

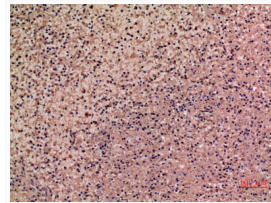
Note STRICTLY FOR FURTHER SCIENTIFIC RESEARCH USE ONLY (RUO). MUST NOT TO BE USED IN DIAGNOSTIC OR THERAPEUTIC APPLICATIONS.



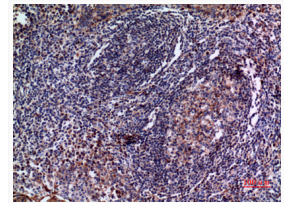
Immunohistochemical analysis of paraffin-embedded human-spleen, antibody was diluted at 1:100



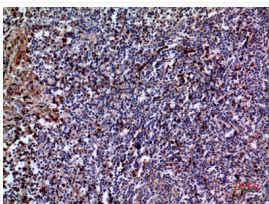
Western blot analysis of lysate from MCF7 cells, using IL28A Antibody.



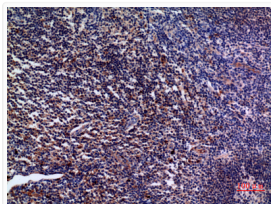
Immunohistochemical analysis of paraffin-embedded human-spleen, antibody was diluted at 1:100



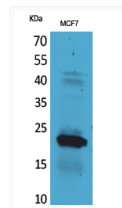
Immunohistochemical analysis of paraffin-embedded human-tonsil, antibody was diluted at 1:100



Immunohistochemical analysis of paraffin-embedded human-tonsil, antibody was diluted at 1:100



Immunohistochemical analysis of paraffin-embedded human-tonsil, antibody was diluted at 1:100



Western blot analysis of MCF7 cells using IL-28 Polyclonal Antibody. Secondary antibody was diluted at 1:20000