

Anti-KLRC1 antibody (101-150 aa) (STJ96653)

GENERAL INFORMATION

Product Type	Primary antibodies
Applications	WB/IHC/IF/ELISA
Host / Source	Rabbit
Reactivity	Human/Rat/Mouse

PRODUCT PROPERTIES

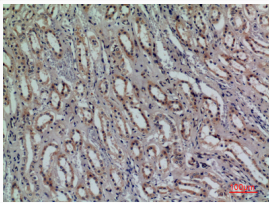
Clonality	Polyclonal
Concentration	1 mg/mL
Conjugation	Unconjugated
Purification	The antibody was affinity-purified from rabbit antiserum by affinity-chromatography using epitope-specific immunogen.
Dilution Range	WB 1:500-1:2000 IHC-P 1:100-300 ELISA 1:20000 IF 1:50-200
Formulation	Liquid in PBS containing 50% Glycerol, 0.5% BSA and 0.02% Sodium Azide.
Isotype	IgG
Molecular Weight	Observed: 25kD
Storage Instruction	Store at -20°C for up to 1 year from the date of receipt, and avoid repeat freeze-thaw cycles.

TARGET INFORMATION

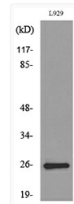
Gene ID	3821
Gene Symbol	KLRC1
UniProt ID	NKG2A_HUMAN
Immunogen Region	101-150 aa
Specificity	CD159a/c Polyclonal Antibody detects endogenous levels of CD159a/c protein.

ADDITIONAL INFORMATION

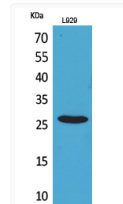
Note STRICTLY FOR FURTHER SCIENTIFIC RESEARCH USE ONLY (RUO). MUST NOT TO BE USED IN DIAGNOSTIC OR THERAPEUTIC APPLICATIONS.



Immunohistochemical analysis of paraffin-embedded human-kidney, antibody was diluted at 1:100



Western blot analysis of lysate from L929 cells, using KLRC1/2/3 Antibody.



Western blot analysis of L929 cells using CD159a/c Polyclonal Antibody.. Secondary antibody was diluted at 1:20000