

Anti-ENPP3 antibody (281-330 aa) (STJ96639)

GENERAL INFORMATION

Product Type	Primary antibodies
Applications	WB/IHC/IF/ELISA
Host / Source	Rabbit
Reactivity	Human/Mouse/Rat

PRODUCT PROPERTIES

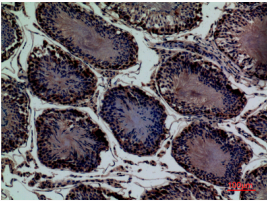
Clonality	Polyclonal
Concentration	1 mg/mL
Conjugation	Unconjugated
Purification	The antibody was affinity-purified from rabbit antiserum by affinity-chromatography using epitope-specific immunogen.
Dilution Range	WB 1:500-1:2000 IHC-P 1:100-300 ELISA 1:20000 IF 1:50-200
Formulation	Liquid in PBS containing 50% Glycerol, 0.5% BSA and 0.02% Sodium Azide.
Isotype	IgG
Molecular Weight	Observed: 100kD
Storage Instruction	Store at -20°C for up to 1 year from the date of receipt, and avoid repeat freeze-thaw cycles.

TARGET INFORMATION

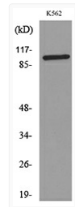
Gene ID	5169
Gene Symbol	ENPP3
UniProt ID	ENPP3_HUMAN
Immunogen Region	281-330 aa
Specificity	CD203c Polyclonal Antibody detects endogenous levels of CD203c protein.

ADDITIONAL INFORMATION

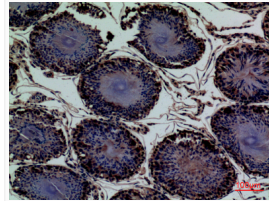
Note STRICTLY FOR FURTHER SCIENTIFIC RESEARCH USE ONLY (RUO). MUST NOT TO BE USED IN DIAGNOSTIC OR THERAPEUTIC APPLICATIONS.



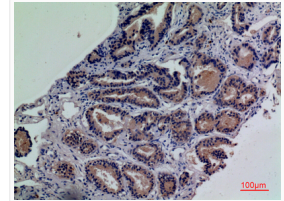
Immunohistochemical analysis of paraffin-embedded rat-testis, antibody was diluted at 1:100



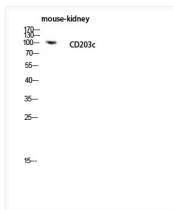
Western blot analysis of lysate from K562 cells, using ENPP3 Antibody.



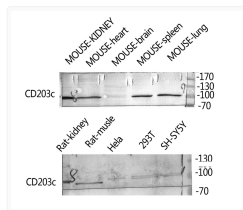
Immunohistochemical analysis of paraffin-embedded rat-testis, antibody was diluted at 1:100



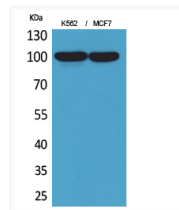
Immunohistochemical analysis of paraffin-embedded human-prostate-cancer, antibody was diluted at 1:100



Western blot analysis of mouse-kidney lysis using CD203c antibody. Antibody was diluted at 1:2000. Secondary antibody was diluted at 1:20000



Western blot analysis of rat-kidney, mouse spleen, mouse lung using ENPP3 Polyclonal Antibody. Antibody was diluted at 1:2000. Secondary antibody was diluted at 1:20000



Western blot analysis of K562, MCF7 cells using CD203c Polyclonal Antibody. Antibody was diluted at 1:2000. Secondary antibody was diluted at 1:20000