

Anti-CYP11B1 antibody (61-110 aa) (STJ96589)

GENERAL INFORMATION

Product Type	Primary antibodies
Applications	WB/ELISA
Host / Source	Rabbit
Reactivity	Human

PRODUCT PROPERTIES

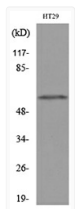
Clonality	Polyclonal
Concentration	1 mg/mL
Conjugation	Unconjugated
Purification	The antibody was affinity-purified from rabbit antiserum by affinity-chromatography using epitope-specific immunogen.
Dilution Range	WB 1:500-1:2000 ELISA 1:20000
Formulation	Liquid in PBS containing 50% Glycerol, 0.5% BSA and 0.02% Sodium Azide.
Isotype	IgG
Molecular Weight	Observed: 58kD
Storage Instruction	Store at -20°C for up to 1 year from the date of receipt, and avoid repeat freeze-thaw cycles.

TARGET INFORMATION

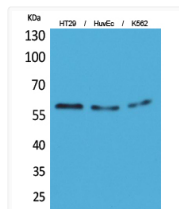
Gene ID	1584
Gene Symbol	CYP11B1
UniProt ID	C11B1_HUMAN
Immunogen Region	61-110 aa
Specificity	CYP11B1/2 Polyclonal Antibody detects endogenous levels of CYP11B1/2 protein.

ADDITIONAL INFORMATION

Note STRICTLY FOR FURTHER SCIENTIFIC RESEARCH USE ONLY (RUO). MUST NOT TO BE USED IN DIAGNOSTIC OR THERAPEUTIC APPLICATIONS.



Western blot analysis of lysate from HT29 cells, using CYP11B1/2 Antibody.



Western blot analysis of HT29, HuvEc, K562 cells using CYP11B1/2 Polyclonal Antibody.. Secondary antibody was diluted at 1:20000