

## Anti-FGF18 antibody (158-207 aa) (STJ96546)

### GENERAL INFORMATION

Product Type	Primary antibodies
Applications	WB/IHC/IF/ELISA
Host / Source	Rabbit
Reactivity	Human/Mouse/Rat/Sheep

### PRODUCT PROPERTIES

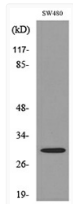
Clonality	Polyclonal
Concentration	1 mg/mL
Conjugation	Unconjugated
Purification	The antibody was affinity-purified from rabbit antiserum by affinity-chromatography using epitope-specific immunogen.
Dilution Range	WB 1:500-1:2000 IHC-P 1:100-300 ELISA 1:20000 IF 1:50-200
Formulation	Liquid in PBS containing 50% Glycerol, 0.5% BSA and 0.02% Sodium Azide.
Isotype	IgG
Molecular Weight	Observed: 28kD
Storage Instruction	Store at -20°C for up to 1 year from the date of receipt, and avoid repeat freeze-thaw cycles.

### TARGET INFORMATION

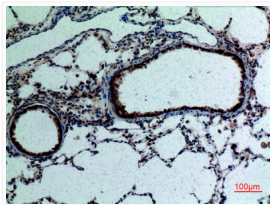
Gene ID	<a href="#">8817</a>
Gene Symbol	<a href="#">FGF18</a>
UniProt ID	<a href="#">FGF18_HUMAN</a>
Immunogen Region	158-207 aa
Specificity	FGF-18 Polyclonal Antibody detects endogenous levels of FGF-18 protein.

### ADDITIONAL INFORMATION

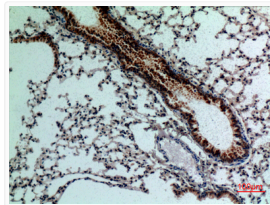
Note STRICTLY FOR FURTHER SCIENTIFIC RESEARCH USE ONLY (RUO). MUST NOT TO BE USED IN DIAGNOSTIC OR THERAPEUTIC APPLICATIONS.



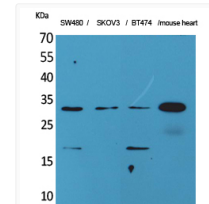
Western blot analysis of lysate from SW480 cells, using FGF18 Antibody.



Immunohistochemical analysis of paraffin-embedded rat-lung, antibody was diluted at 1:100



Immunohistochemical analysis of paraffin-embedded mouse-lung, antibody was diluted at 1:100



Western blot analysis of SW480, SKOV3, BT474, mouse heart cells using FGF-18 Polyclonal Antibody.. Secondary antibody was diluted at 1:20000 cells nucleus extracted by Minute TM Cytoplasmic and Nuclear Fractionation kit (SC-003, Inventibiotech, MN, USA).