

## Anti-FGF6 antibody (159-208 aa) (STJ96534)

### GENERAL INFORMATION

Product Type	Primary antibodies
Applications	WB/ELISA
Host / Source	Rabbit
Reactivity	Human/Mouse/Rat

### PRODUCT PROPERTIES

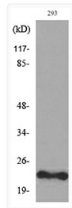
Clonality	Polyclonal
Concentration	1 mg/mL
Conjugation	Unconjugated
Purification	The antibody was affinity-purified from rabbit antiserum by affinity-chromatography using epitope-specific immunogen.
Dilution Range	WB 1:500-1:2000 ELISA 1:20000
Formulation	Liquid in PBS containing 50% Glycerol, 0.5% BSA and 0.02% Sodium Azide.
Isotype	IgG
Molecular Weight	Observed: 23kD
Storage Instruction	Store at -20°C for up to 1 year from the date of receipt, and avoid repeat freeze-thaw cycles.

### TARGET INFORMATION

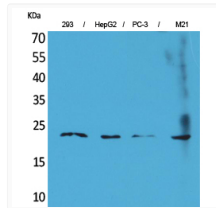
Gene ID	<a href="#">2251</a>
Gene Symbol	<a href="#">FGF6</a>
UniProt ID	<a href="#">FGF6_HUMAN</a>
Immunogen Region	159-208 aa
Specificity	FGF-6 Polyclonal Antibody detects endogenous levels of FGF-6 protein.

### ADDITIONAL INFORMATION

Note **STRICTLY FOR FURTHER SCIENTIFIC RESEARCH USE ONLY (RUO). MUST NOT TO BE USED IN DIAGNOSTIC OR THERAPEUTIC APPLICATIONS.**



Western blot analysis of lysate from 293 cells, using FGF6 Antibody.



Western blot analysis of 293, HepG2, PC-3, M21 cells using FGF-6 Polyclonal Antibody.. Secondary antibody was diluted at 1:20000