

## Anti-CFLAR antibody (1-50 aa) (STJ96521)

### GENERAL INFORMATION

Product Type	Primary antibodies
Applications	WB/ELISA
Host / Source	Rabbit
Reactivity	Human/Rat/Mouse

### PRODUCT PROPERTIES

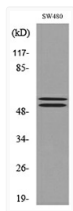
Clonality	Polyclonal
Concentration	1 mg/mL
Conjugation	Unconjugated
Purification	The antibody was affinity-purified from rabbit antiserum by affinity-chromatography using epitope-specific immunogen.
Dilution Range	WB 1:500-1:2000 ELISA 1:20000
Formulation	Liquid in PBS containing 50% Glycerol, 0.5% BSA and 0.02% Sodium Azide.
Isotype	IgG
Molecular Weight	Observed: 55kD
Storage Instruction	Store at -20°C for up to 1 year from the date of receipt, and avoid repeat freeze-thaw cycles.

### TARGET INFORMATION

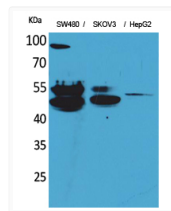
Gene ID	<a href="#">8837</a>
Gene Symbol	<a href="#">CFLAR</a>
UniProt ID	<a href="#">CFLAR_HUMAN</a>
Immunogen Region	1-50 aa
Specificity	c-FLIP Polyclonal Antibody detects endogenous levels of c-FLIP protein.

### ADDITIONAL INFORMATION

Note **STRICTLY FOR FURTHER SCIENTIFIC RESEARCH USE ONLY (RUO). MUST NOT TO BE USED IN DIAGNOSTIC OR THERAPEUTIC APPLICATIONS.**



Western blot analysis of lysate from SW480 cells, using CFLAR Antibody.



Western blot analysis of SW480, SKOV3, HepG2 cells using c-FLIP Polyclonal Antibody.. Secondary antibody was diluted at 1:20000