

Anti-SYCP3 antibody (Internal) (STJ96482)

GENERAL INFORMATION

Product Type	Primary antibodies
Applications	WB/ELISA/IHC
Host / Source	Rabbit
Reactivity	Human/Mouse

PRODUCT PROPERTIES

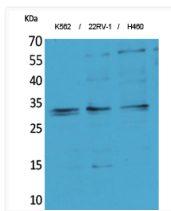
Clonality	Polyclonal
Concentration	1 mg/mL
Conjugation	Unconjugated
Purification	The antibody was affinity-purified from rabbit antiserum by affinity-chromatography using epitope-specific immunogen.
Dilution Range	WB 1:500-2000 IHC-P 1:50-300 ELISA 2000-20000
Formulation	Liquid in PBS containing 50% Glycerol, 0.5% BSA and 0.02% Sodium Azide.
Isotype	IgG
Molecular Weight	Observed: 27kD
Storage Instruction	Store at -20°C for up to 1 year from the date of receipt, and avoid repeat freeze-thaw cycles.

TARGET INFORMATION

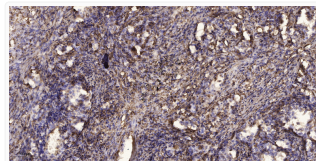
Gene ID	50511
Gene Symbol	SYCP3
UniProt ID	SYCP3_HUMAN
Immunogen Region	Internal
Specificity	SCP-3 Polyclonal Antibody detects endogenous levels of SCP-3 protein.

ADDITIONAL INFORMATION

Note STRICTLY FOR FURTHER SCIENTIFIC RESEARCH USE ONLY (RUO). MUST NOT TO BE USED IN DIAGNOSTIC OR THERAPEUTIC APPLICATIONS.



Western Blot analysis of K562, 22RV-1, H460 cells using SCP-3 Polyclonal Antibody. Secondary antibody (catalog#: STJ96482)



Immunohistochemical analysis of paraffin-embedded human squamous cell carcinoma of lung. 1. Antibody was diluted at STJ96482